



JDS Digital Security
P.O. Box 374
New Baltimore, MI 48047
(586) 749-6342
(734) 629-1555 Fax
www.softsite32.com

Command Center

QuickStart

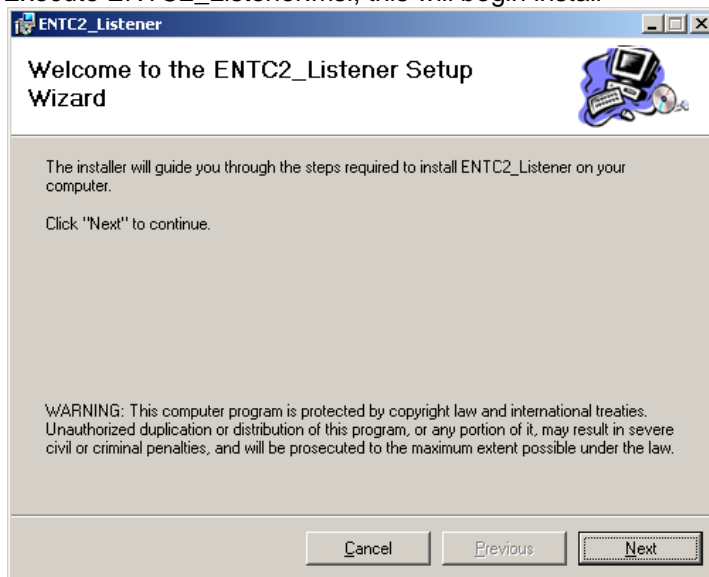
4/27/2010

Command Center is to be run in conjunction with Enterprise.
Node Controller will need to have access to the Enterprise database.

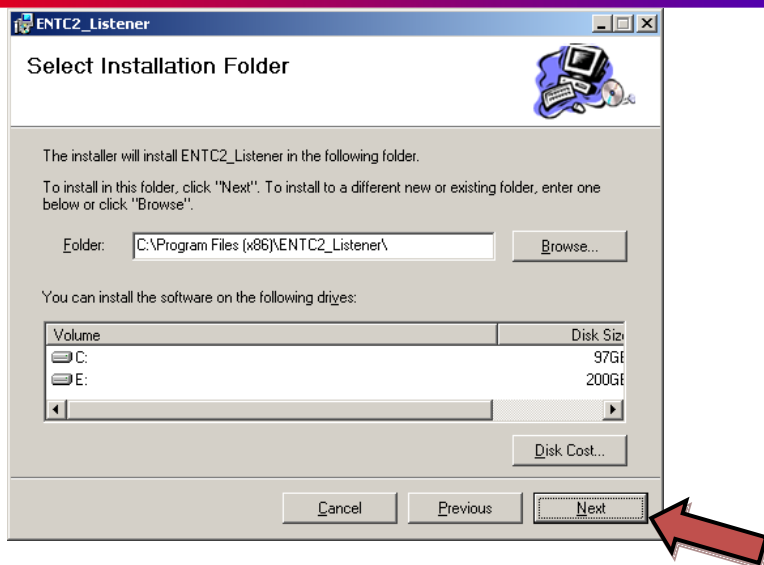
1. **Download Command Center Node Controller** [here](#). Node Controller application, sends video to the listening pc
Download Command Center Listener [here](#). Listener runs on any computer that is to receive video(like a video wall)

2. Install ENTC2_Listener

- 1) Unzip the ENTC2_Listener zip file
- 2) Navigate to unzipped directory
- 3) Execute ENTC2_Listener.msi, this will begin install

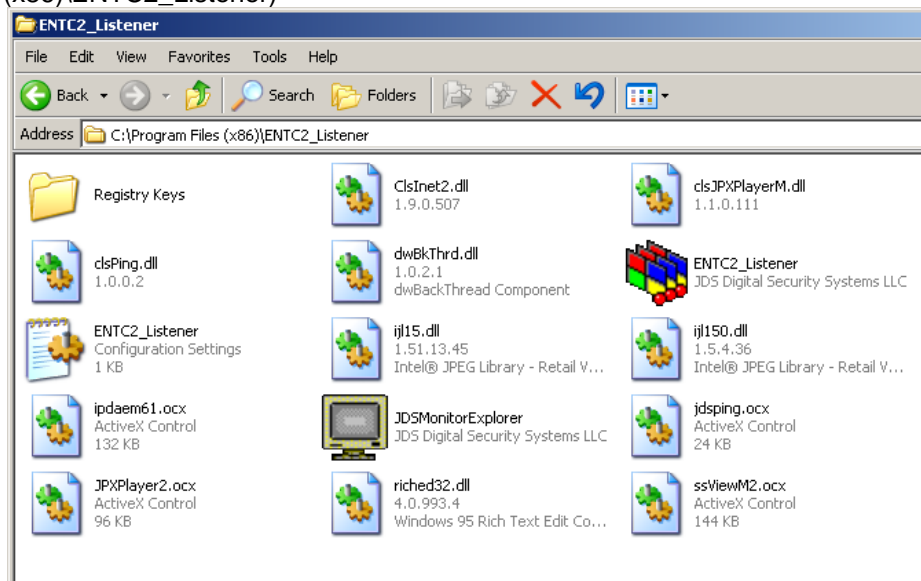


- 4) Complete installation leaving all settings default



3. Setup ENTIC2_Listener

- 1) Find installation directory(C:\Program Files\ENTIC2_Listener\ or C:\Program Files (x86)\ENTIC2_Listener)

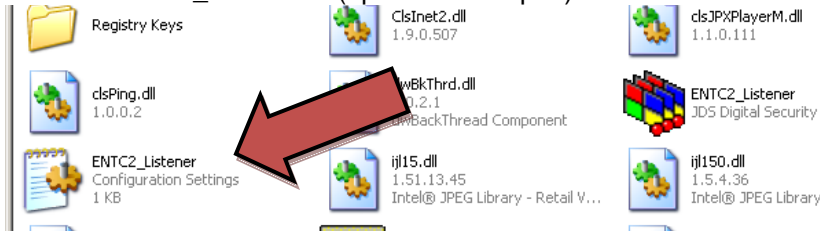




Digital Security Systems

JDS Digital Security
P.O. Box 374
New Baltimore, MI 48047
(586) 749-6342
(734) 629-1555 Fax
www.softsite32.com

2) Edit the *ENTC2_Listener.ini*(open with notepad)



```
ENTC2_Listener.ini - Notepad
File Edit Format View Help
[[Monitors]
MonitorCount=9
MonPos_1 = 0 , 0
MonSize_1 = 853 x 533

MonPos_2 = 853 , 0
MonSize_2 = 853 x 533

MonPos_3 = 1706 , 0
MonSize_3 = 853 x 533

MonPos_4 = 0 , 533
MonSize_4 = 853 x 533

MonPos_5 = 853 , 533
MonSize_5 = 853 x 533

MonPos_6 = 1706 , 533
MonSize_6 = 853 x 533

MonPos_7 = 0 , 1066
MonSize_7 = 853 x 533

MonPos_8 = 853 , 1066
MonSize_8 = 853 x 533

MonPos_9 = 1706 , 1066
MonSize_9 = 853 x 533

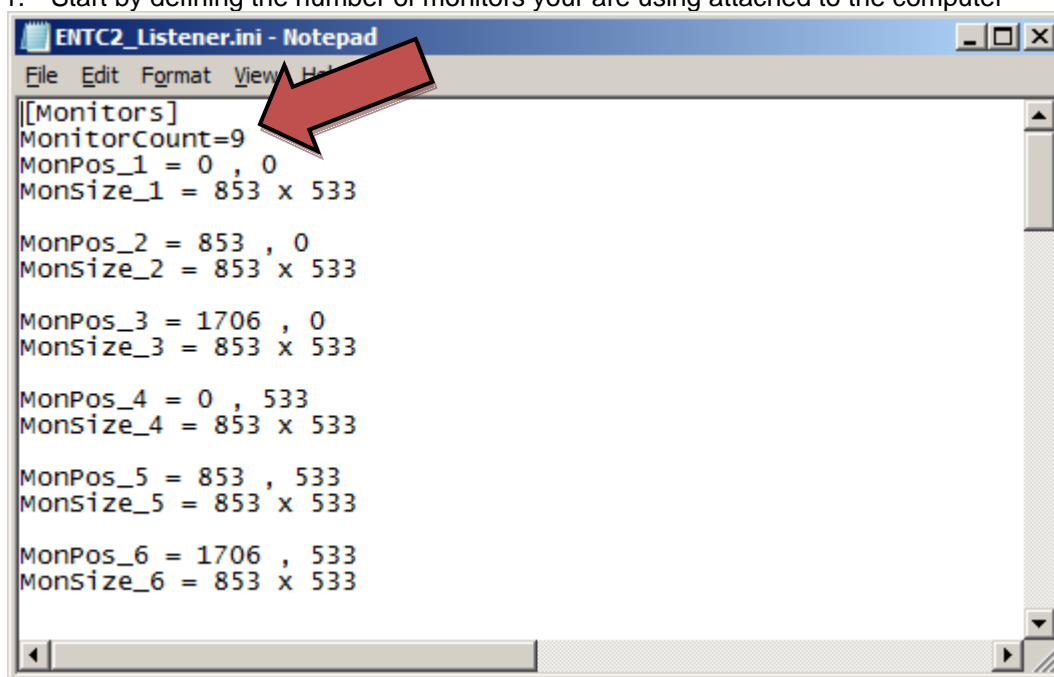
[Initialize]
CaptionTransparencyPCT=60
DebugLevel = 12
DisplayDwellSec = 3
EnableErrorLog = TRUE
```

- 3) You will need to input the starting position of each monitor. Each computer may or may not have the same monitor resolution, and or size.

MonPos sets the monitors top left corner position in pixels, these can be a negative numbers in relation to the taskbar and your default main monitor. MonSize sets the monitors resolution, and will always be positive numbers. Each computer running the listener must have its monitors defined in the INI file.

Your listener can be set up for each individual physical monitor, or virtualized to gain more density on larger monitors.

1. Start by defining the number of monitors your are using attached to the computer



```
ENT2_Listener.ini - Notepad
File Edit Format View Help
[Monitors]
MonitorCount=9
MonPos_1 = 0 , 0
MonSize_1 = 853 x 533

MonPos_2 = 853 , 0
MonSize_2 = 853 x 533

MonPos_3 = 1706 , 0
MonSize_3 = 853 x 533

MonPos_4 = 0 , 533
MonSize_4 = 853 x 533

MonPos_5 = 853 , 533
MonSize_5 = 853 x 533

MonPos_6 = 1706 , 533
MonSize_6 = 853 x 533
```

2. Define each monitor attached to the computer, by setting the starting position and size of the monitors in pixels



Digital Security Systems

JDS Digital Security
P.O. Box 374
New Baltimore, MI 48047
(586) 749-6342
(734) 629-1555 Fax
www.softsite32.com

A screenshot of a Notepad window titled 'ENTC2_Listener.ini - Notepad'. The window contains the following text:

```
[[Monitors]
MonitorCount=9
MonPos_1 = 0 , 0
MonSize_1 = 853 x 533

MonPos_2 = 853 , 0
MonSize_2 = 853 x 533

MonPos_3 = 1706 , 0
MonSize_3 = 853 x 533

MonPos_4 = 0 , 533
MonSize_4 = 853 x 533

MonPos_5 = 853 , 533
MonSize_5 = 853 x 533

MonPos_6 = 1706 , 533
MonSize_6 = 853 x 533
```

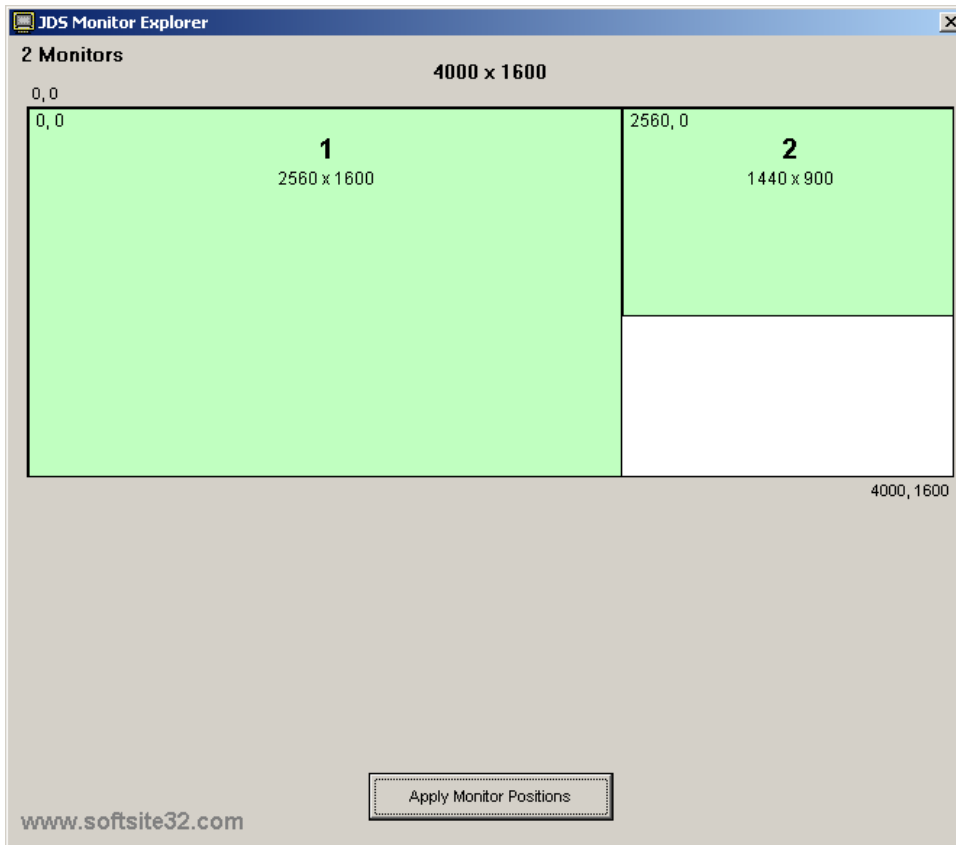
A red arrow points to the first line of the monitor configuration, 'MonPos_1 = 0 , 0'.

3. Save the ini file.
4. If you need assistance you can run the JDS Monitor Explorer.exe located in the same directory as the INI file.

JDS Monitor Explorer.exe

This utility will identify all monitors attached to your computer and all the coordinates needed, and can apply them to the ini for you. NOTE: the INI must be closed before running the utility.

- A. To apply the settings read from the utility(physical monitors) press the *Apply Monitor Positions* button at the bottom



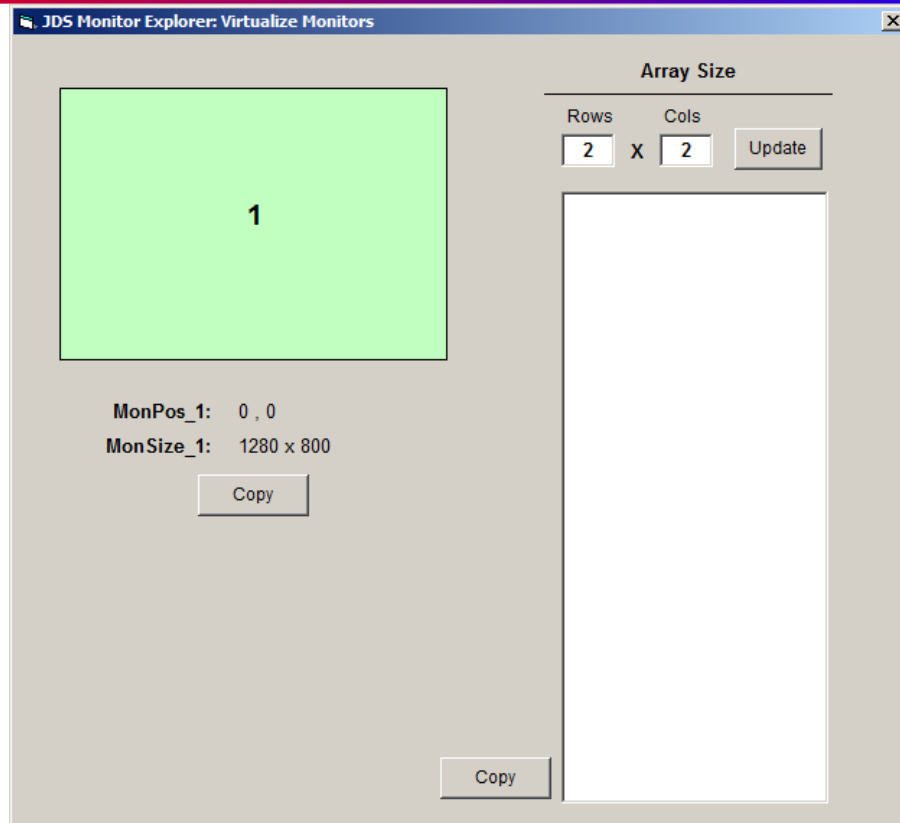
- B. Reopen the INI file and you should see your settings have changed to match what was displayed with the utility. You can skip the rest of the section, and continue to #5 if you do not wish to virtualize monitors.

- C. To Virtualize monitors, for more density, double click on the monitor you wish to virtualize.

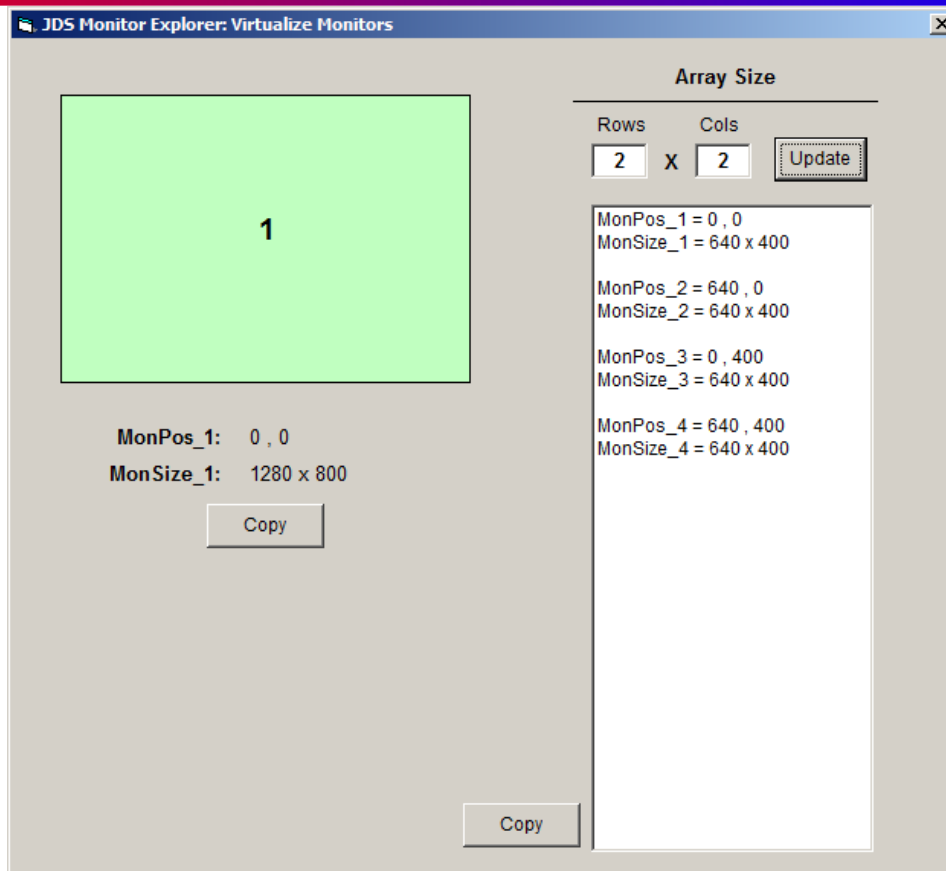


Digital Security Systems

JDS Digital Security
P.O. Box 374
New Baltimore, MI 48047
(586) 749-6342
(734) 629-1555 Fax
www.softsite32.com



- D. You will need to select the number of rows and columns to accommodate the number of monitors you wish. Select update, and you will see the coordinates displayed.



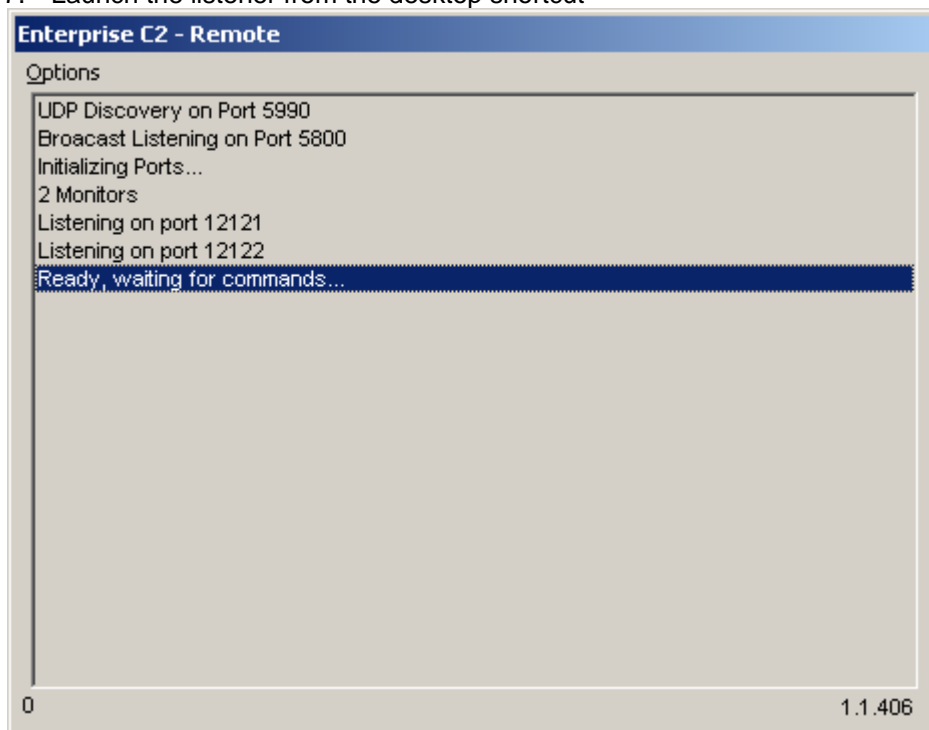
- E. Select the lower copy button, to place the settings on the clipboard.
- F. Paste the information under the monitor section and remove the old information.
- G. Save the ini file.



5. Next Set the System ID if you have more than one listener running on the network. These must be different from computer to computer.

The remainder of the INI settings, are explained at the end of this document in the appendix.

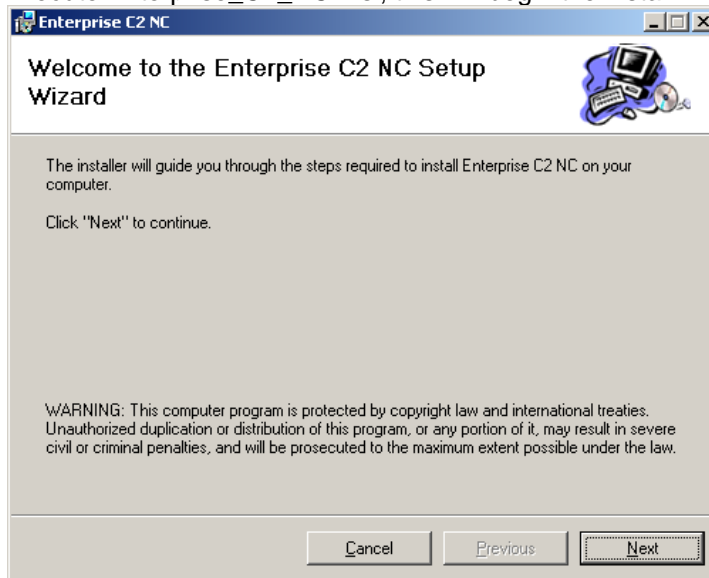
6. Save and close the INI, if you haven't already close the Monitor Explorer
7. Launch the listener from the desktop shortcut



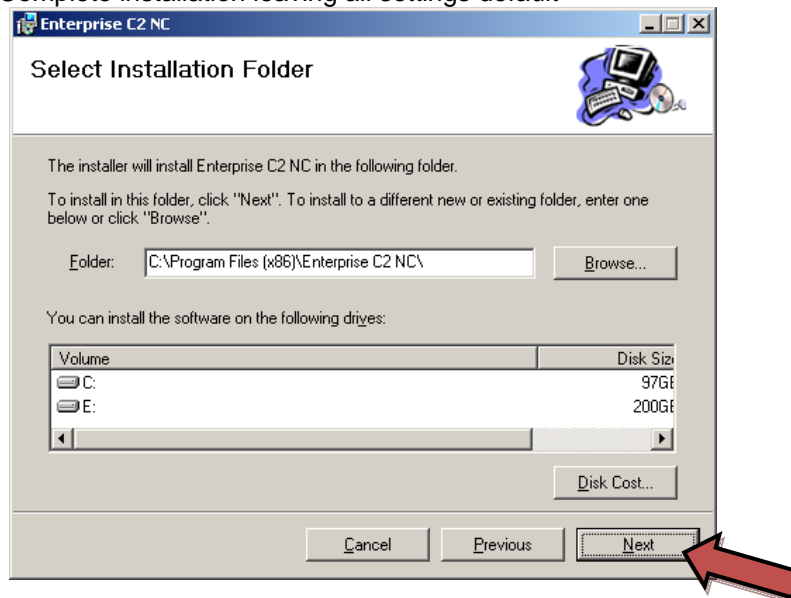
The Listener utilizes UDP ports 5990, 5800, and TCP Ports 12121-12129 to communicate with the node controller. Make sure that if you have a firewall installed it is either turned off, configured to allow the ports specified, or configured to ignore the listener application. Check with the manufacturer on instructions on how to accomplish this.

4. Install Enterprise_C2_NC

- 1) Unzip the Enterprise_C2_NC zip file
- 2) Navigate to unzipped directory
- 3) Execute Enterprise_C2_NC.msi, this will begin the install

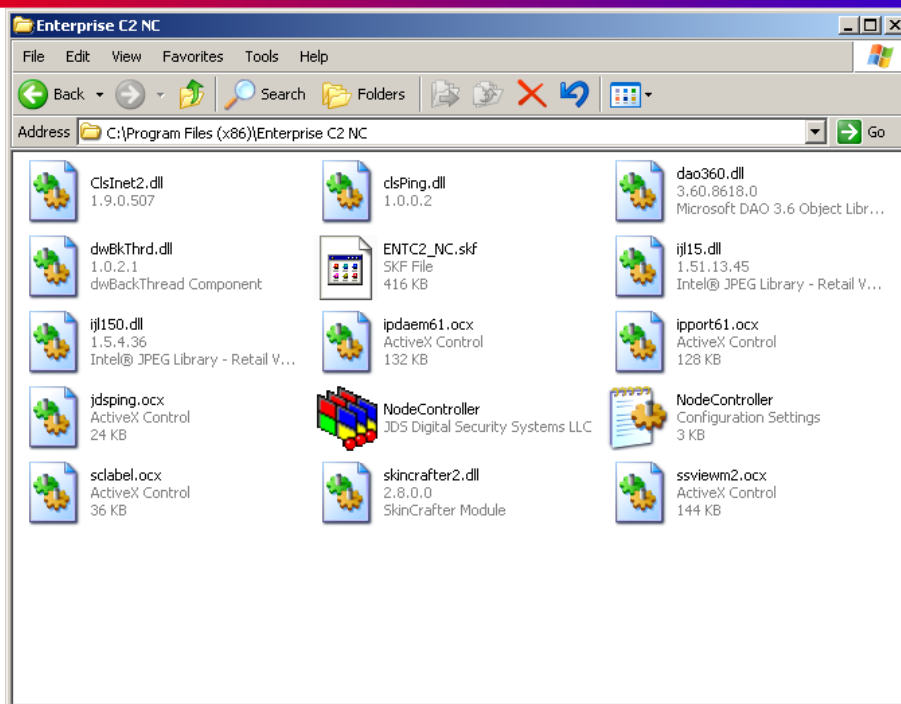


- 4) Complete installation leaving all settings default

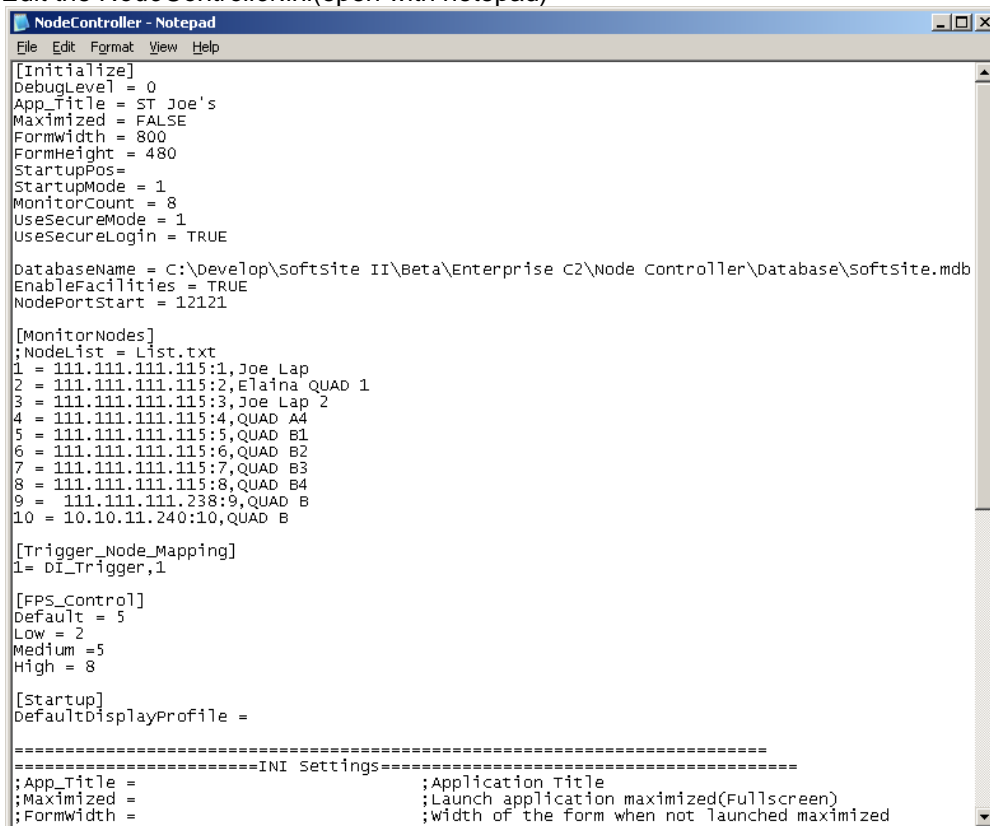


5. Setup Enterprise_C2_NC

- 1) Find installation directory(C:\Program Files\ Enterprise C2 NC\ or C:\Program Files (x86)\Enterprise C2 NC)



2) Edit the *NodeController.ini*(open with notepad)



```

NodeController - Notepad
File Edit Format View Help

[Initialize]
DebugLevel = 0
App_Title = ST Joe's
Maximized = FALSE
Formwidth = 800
FormHeight = 480
StartupPos=
StartupMode = 1
MonitorCount = 8
UseSecureMode = 1
UseSecureLogin = TRUE

DatabaseName = C:\Develop\Softsite II\Beta\Enterprise C2\Node Controller\Database\Softsite.mdb
EnableFacilities = TRUE
NodePortStart = 12121

[MonitorNodes]
;NodeList = List.txt
1 = 111.111.111.115:1, Joe Lap
2 = 111.111.111.115:2, Elaine QUAD 1
3 = 111.111.111.115:3, Joe Lap 2
4 = 111.111.111.115:4, QUAD A4
5 = 111.111.111.115:5, QUAD B1
6 = 111.111.111.115:6, QUAD B2
7 = 111.111.111.115:7, QUAD B3
8 = 111.111.111.115:8, QUAD B4
9 = 111.111.111.238:9, QUAD B
10 = 10.10.11.240:10, QUAD B

[Trigger_Node_Mapping]
1= DI_Trigger,1

[FPS_Control]
Default = 5
Low = 2
Medium =5
High = 8

[Startup]
DefaultDisplayProfile =

=====INI Settings=====
;App_Title = ;Application Title
;Maximized = ;Launch application maximized(Fullscreen)
;Formwidth = ;width of the form when not launched maximized
  
```



JDS Digital Security
P.O. Box 374
New Baltimore, MI 48047
(586) 749-6342
(734) 629-1555 Fax
www.softsite32.com

- 3) Set the DatabaseName= to match the location of your Enterprise database. This path can be Relative(\), Absolute(c:\), or UNC(\)
- 4) Configure the Monitor Nodes. Each line represents an individual monitor, not just the listening computer(pc with ENTC2_Listener installed and running). For example if you have a videowall of 8 monitors running off the same computer, and 3 other monitors, each one on their own computer, you should have a total of 11 monitor nodes(11 lines)

1 = IP Address:Monitor#,Monitor Caption

1 = 192.168.1.110:1,Monitor 1

2 = 192.168.1.110:2,Monitor 2

3 = 192.168.1.115:1,Security Desk

- 5) Set the MonitorCount= to the number of total monitors being used
- 6) Save the changes you have made and close the INI file.

The remainder of the INI settings, are explained at the end of this document in the appendix.

- 7) Launch the Node Controller from the shortcut on the desktop

6. Use Command Center

- 1) Login, with your Softsite32 Enterprise Credentials, Currently only administrators have access rights to the product.
- 2) Refer to the Command Center Manual



7. Appendix

Listener INI Description

MonitorCount	Sets the number of monitors used with this listener
MonPos_1	Starting upper left position of the monitors in pixels, may be a negative number in relation to the location of the taskbar.
MonSize_1	Size of the monitor in pixels, will always be a positive number
SystemID	Listener ID number used for broadcast alerts
CaptionTransparencyPCT	Sets the transparency level of the captions when displayed over the video
StartPos	Sets the launch position of the listener's window
Minimized	Launches the application minimized, when ShowOnStartup is true
DebugLevel	Do Not Edit
DisplayDwellSec	Sets the time in seconds the captions, and other events are displayed
EnableErrorLog	Allows errors to be written to error log
ShowOnStartup	Launches application onscreen not in system tray
THDelay	Sets the thread delay, may help in tuning a system with a high CPU Load
MonitorCount	Sets the number of monitors used with this listener
MonPortBegin	The beginning port the listener uses for monitoring
OfflineThresholdMS	Milliseconds before camera is considered offline, after it has been streaming
SetMinJPGSizeAllowed	The minimum jpg size allowed to be streamed
PingTimeoutMS	Milliseconds before a camera is timed out on connection
SnapshotMode	Sets snapshot mode for axis cameras. Opens and closes connection after each jpg, can increase performance and solve corruption issues
LocalPort	UDP listening port
RemotePort	UDP Broadcast port
Monitor	Monitor Alerts are displayed on this monitor



Node Controller INI Description

DebugLevel	Do Not Edit
App_Title	Sets the Title Bar of the Node Controller
Maximized	Launches Application Maximized
FormWidth	Sets the width of the Node Controller
FormHeight	Sets the height of the Node Controller
StartupPos	Set the startup pos in coordinates 0,0
StartupMode	Do Not Edit
MonitorCount	The number of total monitors the Node Controller is interfacing with
UseSecureMode	Passes the username and password in the url when connecting to the camera, when anonymous access is turned off.
UseSecureLogin	Secure login requires username and password for application access
DatabaseName	Path to camera database, can be Relative(\), Absolute(c:\), or UNC(\\)
EnableFacilities	Milliseconds before camera is considered offline, after it has been streaming
NodePortStart	The beginning port the Node Controller uses for sending messages to the Listener
[MonitorNodes]	The Monitoring node section
NodeList	Monitoring node can be read out of the txt file instead of listed here
1 = 111.111.111.111:1,Monitor 1	Monitor Number = IP address: monitor number on listener, monitor caption
[Trigger_Node_Mapping]	Do not Edit
1 = DI_Trigger,1	Do Not Edit
[FPS_Control]	Framerate control section, set the frame rates for low, medium, high
Default	Default frame rate, should match either low, medium, or high
Low	Low Fps speed
Medium	Medium Fps speed
High	High Fps speed
[Startup]	Startup section
DefaultDisplayProfile	Select the default display profile. Not Yet Implemented