



Digital Security Systems

JDS Digital Security Systems
P.O. Box 374
New Baltimore, MI 48047
(586) 749-6342
(734) 629-1555 Fax
www.softsite32.com

Enterprise Monitor Station

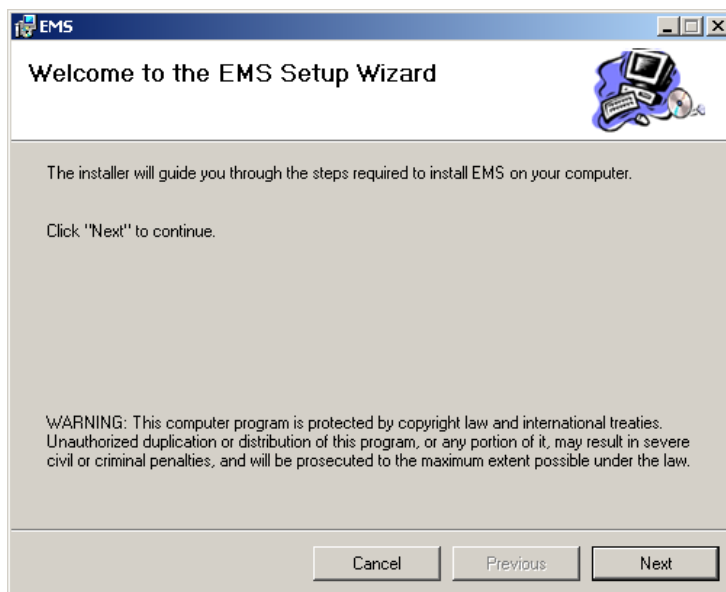
QuickStart

12/22/2008

1.1.0.101

Enterprise Monitor Station (EMS) is a simple ip camera monitoring utility. It displays the cameras fullscreen and in a X by Y grid.

1. Download EMS [here](#).
2. Install EMS
 - 1) Unzip the EMS zip file
 - 2) Navigate to unzipped directory
 - 3) Execute EMS.msi, this will begin install

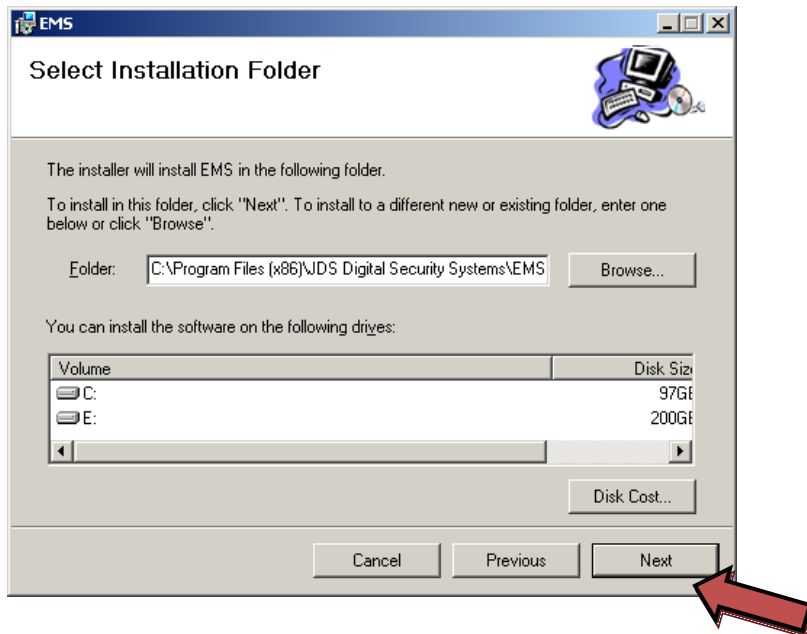


- 4) Complete installation leaving all settings default



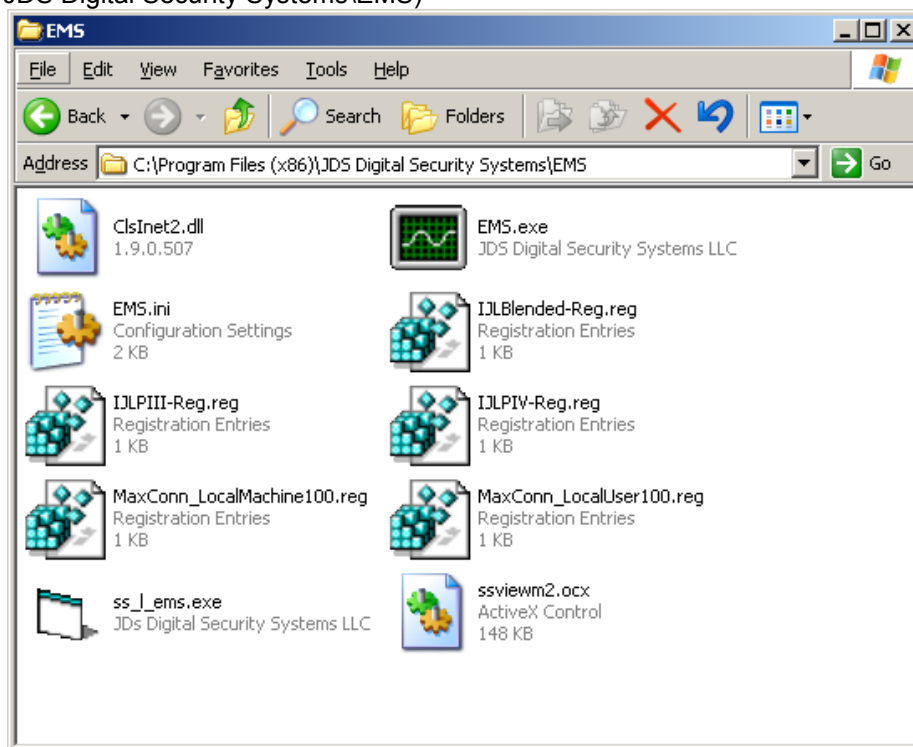
Digital Security Systems

JDS Digital Security Systems
P.O. Box 374
New Baltimore, MI 48047
(586) 749-6342
(734) 629-1555 Fax
www.softsite32.com



3. Setup EMS

- 1) Find installation directory(C:\Program Files\JDS Digital Security Systems\EMS or C:\Program Files (x86)\JDS Digital Security Systems\EMS)

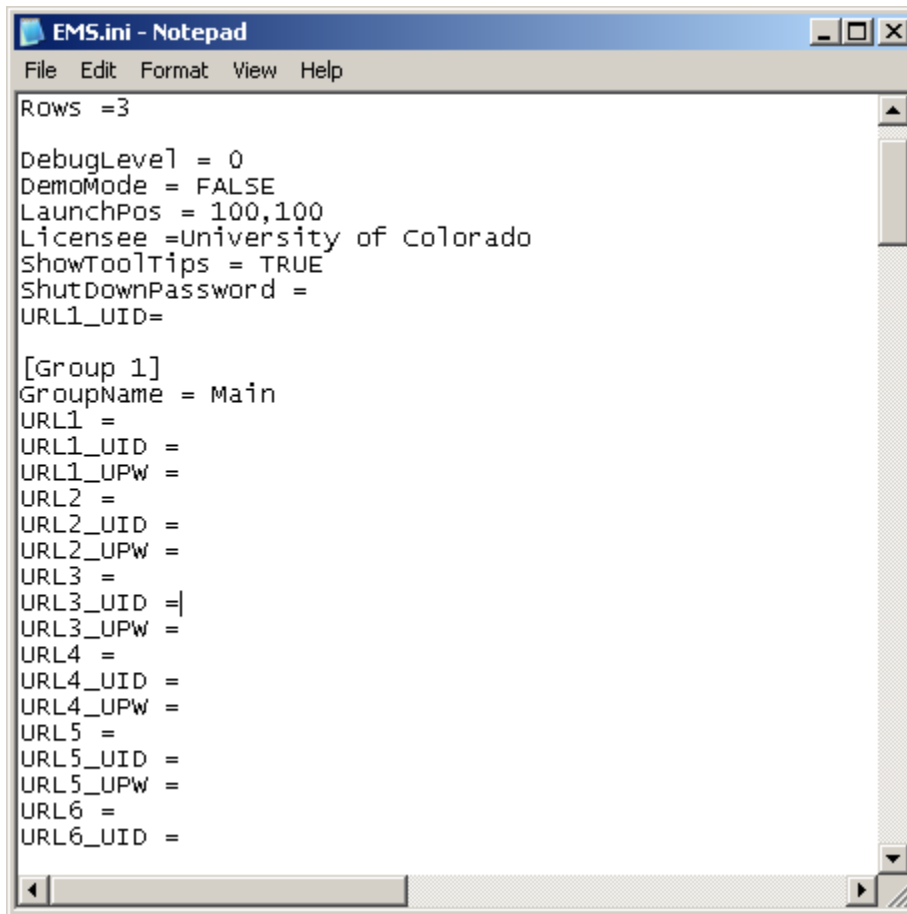
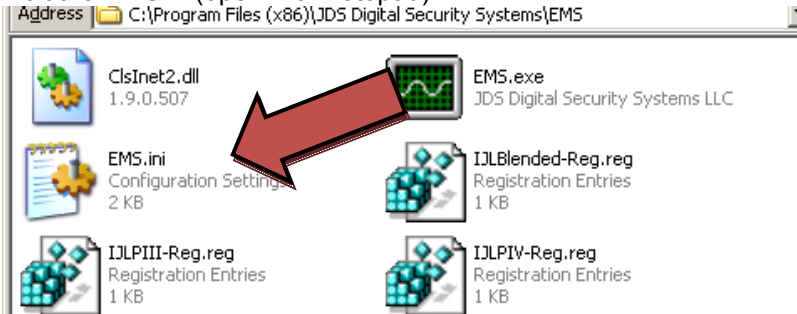




Digital Security Systems

JDS Digital Security Systems
P.O. Box 374
New Baltimore, MI 48047
(586) 749-6342
(734) 629-1555 Fax
www.softsite32.com

2) Edit the EMS.ini(open with notepad)





Digital Security Systems

JDS Digital Security Systems

P.O. Box 374
New Baltimore, MI 48047
(586) 749-6342
(734) 629-1555 Fax
www.softsite32.com

- 3) EMS by default has a grid arrangement of 3 cameras wide, by 3 cameras tall. EMS can only display a total of 25 cameras, so the highest setting is 5 cameras wide by 5 cameras tall. Adjust these dimensions to fit the number of cameras you are going to use. Columns are cameras tall, Rows are cameras wide.

A screenshot of a Notepad window titled 'EMS.ini - Notepad'. The window contains the following text:

```
[Initialize]
Columns=3
Rows =3
DebugLevel = 0
DemoMode = FALSE
LaunchPos = 100,100
Licensee =University of Colorado
ShowToolTips = TRUE
ShutDownPassword =

[Group 1]
GroupName = Main
URL1 = http://192.168.1.70:80/now.jpg?snap=spush
URL1_UID =root
URL1_UPW =system
URL2 = http://192.168.1.50:80/axis-cgi/mjpg/video.cgi
URL2_UID =root
URL2_UPW =pass
URL3 =
URL3_UID =
```

A red arrow points to the 'Columns=3' and 'Rows =3' lines.

Set the Shutdown password, can be a combination of letters and numbers



Digital Security Systems

JDS Digital Security Systems
P.O. Box 374
New Baltimore, MI 48047
(586) 749-6342
(734) 629-1555 Fax
www.softsite32.com

A screenshot of a Notepad window titled 'EMS.ini - Notepad'. The window contains the following text:

```
[Initialize]
Columns=3
Rows =3

DebugLevel = 0
DemoMode = FALSE
LaunchPos = 100,100
Licensee =University of Colorado
ShowToolTips = TRUE
ShutDownPassword =

[Group 1]
GroupName = Main
URL1 = http://192.168.1.70:80/now.jpg?snap=spush
URL1_UID =root
URL1_UPW =system
URL2 = http://192.168.1.50:80/axis-cgi/mjpg/video.cgi
URL2_UID =root
URL2_UPW =pass
URL3 =
URL3_UID =
```

A red arrow points to the 'Licensee' field.

Insert the URL for each camera. The administrator username and password needs to be added separate per URL. These values are encrypted on first run to protect the administrator's password. Below are a few examples of the supported camera URLs.

Axis: <http://192.168.1.100:80/axis-cgi/mjpg/video.cgi?camera=1>

IQEye: <http://192.168.1.101:80/now.jpg?snap=spush>

Sony: <http://192.168.1.102:80/image?speed=0>



Digital Security Systems

JDS Digital Security Systems
P.O. Box 374
New Baltimore, MI 48047
(586) 749-6342
(734) 629-1555 Fax
www.softsite32.com

A screenshot of a Notepad window titled 'EMS.ini - Notepad'. The window contains the following configuration text:

```
[Initialize]
Columns=3
Rows =3

DebugLevel = 0
DemoMode = FALSE
LaunchPos = 100,100
Licensee =University of Colorado
ShowToolTips = TRUE
ShutdownPassword =

[Group 1]
GroupName = Main
URL1 = http://192.168.1.70:80/nov.jpg?snap=spush
URL1_UID =root
URL1_UPW =system
URL2 = http://192.168.1.50:80/axis-cgi/mjpg/video.cgi
URL2_UID =root
URL2_UPW =pass
URL3 =
URL3_UID =
URL3_UPW =
URL4 =
URL4_UID =
```

A red arrow points to the 'URL2_UPW =pass' line.

If you have been given a license enter it into the licensee setting.

If you are testing the software, you may enable the demo mode to allow the software to run for 24 hours without a license.

After all changes to the ini have been made, save the file.

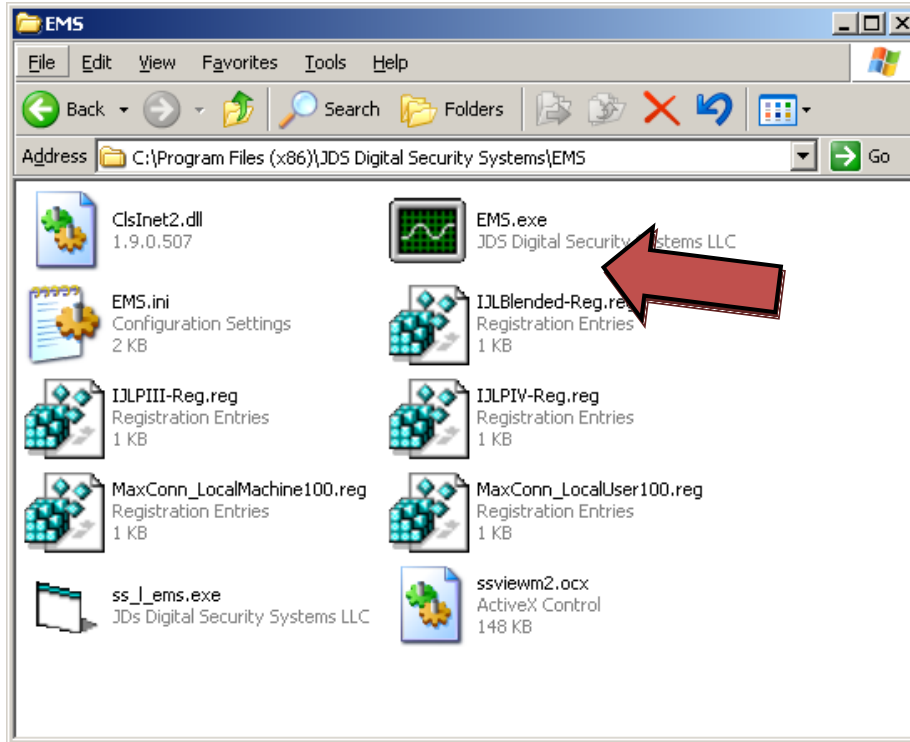
4. Use EMS

- 1) Launch the product, using the shortcut on the desktop, or you can launch the application from within the folder.



Digital Security Systems

JDS Digital Security Systems
P.O. Box 374
New Baltimore, MI 48047
(586) 749-6342
(734) 629-1555 Fax
www.softsite32.com



2) Cameras are displayed



You will notice the software stretches out to fill the entire screen, if you move your cursor to the top a toolbar appears.

The caption checkbox, enable the application read the captions off axis cameras. They are then displayed under each camera, also along with the image size incoming, before it is stretched. It will also display unlicensed if so.

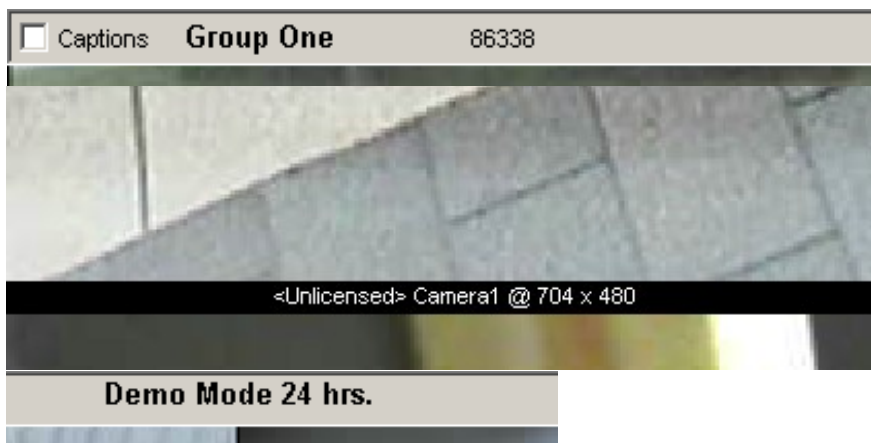


Digital Security Systems

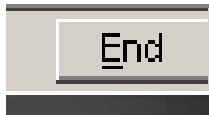
JDS Digital Security Systems

P.O. Box 374
New Baltimore, MI 48047
(586) 749-6342
(734) 629-1555 Fax
www.softsite32.com

Group One is the name listed in the INI. The set of numbers only appear when demo mode is engaged and countdown the 24 hours.



Select end to close to close the application and if a password has been sent you will be asked to enter it





Digital Security Systems

JDS Digital Security Systems
P.O. Box 374
New Baltimore, MI 48047
(586) 749-6342
(734) 629-1555 Fax
www.softsite32.com

5. Appendix

EMS INI Description

Columns	The number of cameras tall
DebugLevel	Only change under direction of JDS
DemoMode	Allows the program to launch without license for 24 hours
LaunchPos	Sets the position of the monitor to which it is launched fullscreen
Licensee	Name of the licensee
Rows	The number of cameras wide
ShowToolTips	Displays tooltips
ShutDownPassword	Password to shutdown the application
GroupName	Name of the first group of cameras, Second group has not yet been enabled
URL1	Sets the URL for camera one, this is the mjpg streaming url. Make sure you include your username and password. URL example Http://root:pass@192.168.1.50:80/axis-cgi/mjpg/video.cgi
URL1_UID	The administrator username for the camera
URL1_UPW	The administrator password for the camera

Version 1.1.0.101