

Archive Manager

Quickstart

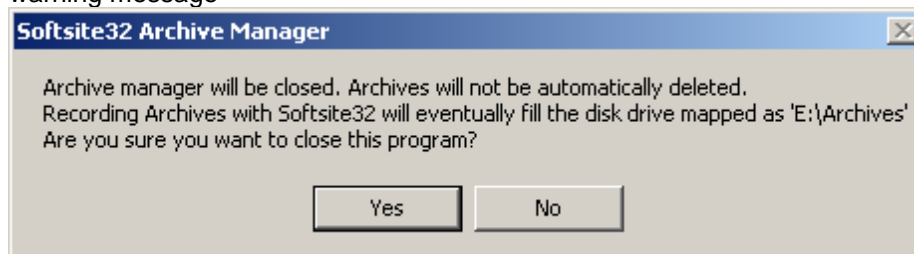
3/30/2011

Archive Manager is used to monitor disk size and delete archives when necessary, either by date or by percentage. This ensures that storage media does not fill and causes Enterprise to halt recording.

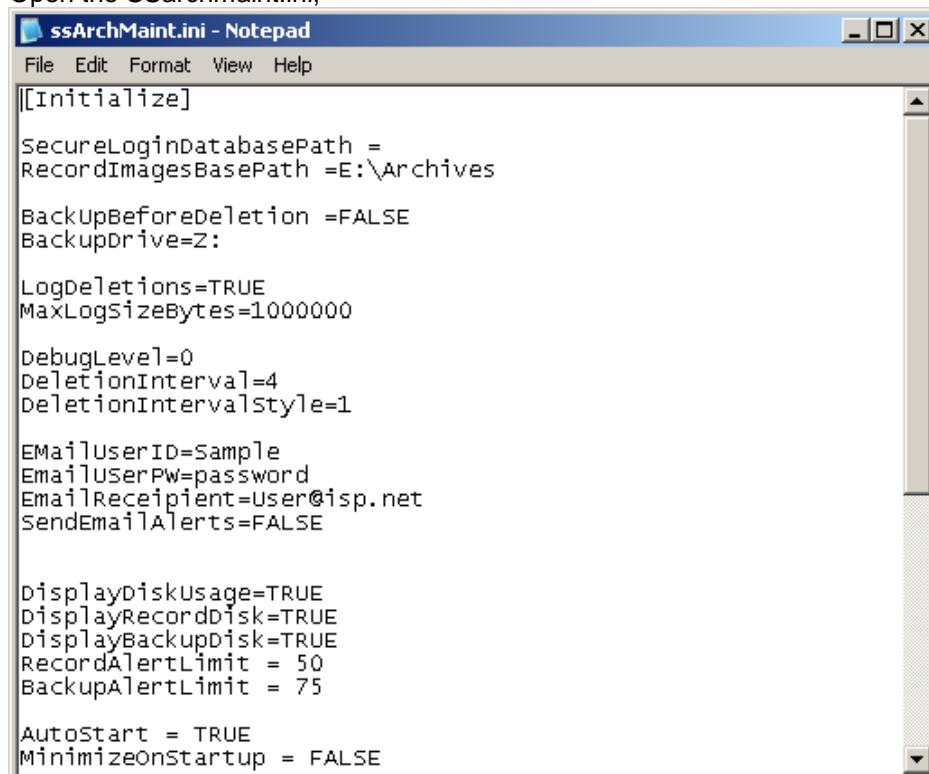
SSarchmaint.exe is installed by Softsite32 Surveillance products automatically. It initially is configured to launch with enterprise automatically.

1. Setup Archive Manager

- 1) Archive manager needs to be closed to be configured, close the application, and accept the warning message



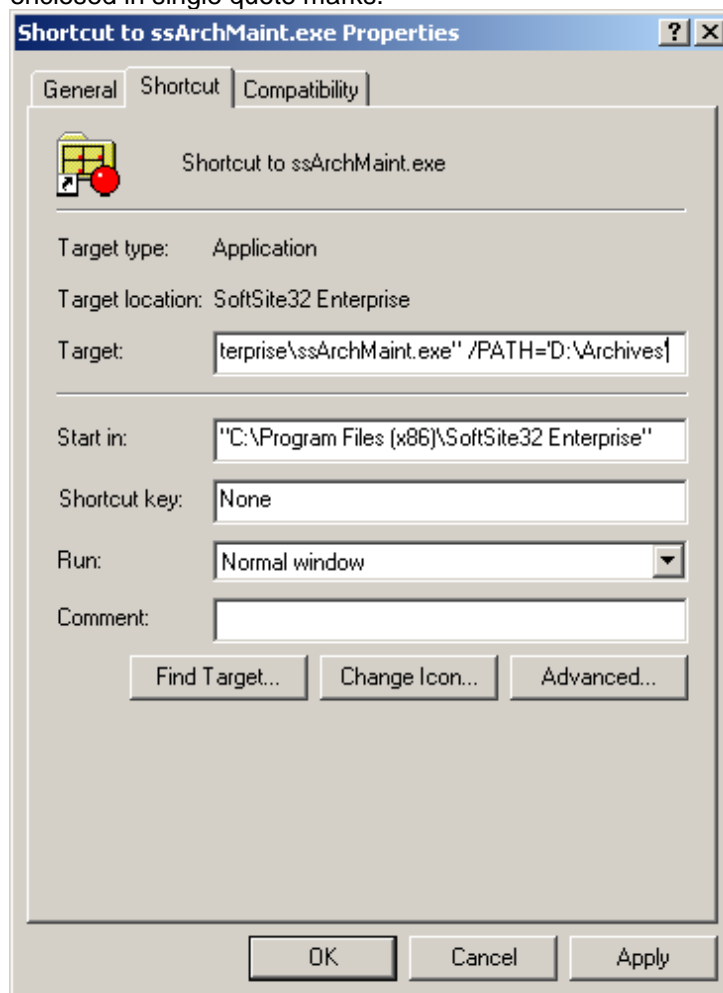
- 2) Locate the application directory, normally C:\Program Files\Softsite32 Enterprise\
- 3) Open the SSarchmaint.ini,



- 4) Set the RecordImagesBasePath to the primary record path set, on the recording tab of each camera in enterprise.
- 5) Save the INI

2. Launch Archive Manager

- 1) If multiple paths are listed per camera, or cameras point to differing locations, you will either need to run multiple copies of Archive Manager, or run Archive Manager 2. To run multiple copies of archive manager with differing paths, you will need to create a shortcut for each different path
- 2) Create a shortcut for each path, and edit its target line to include /PATH='xxx' where 'xxx' is the desired root path. It will override the RecordImagesBase Path in the ini file. Note: the path must be enclosed in single quote marks.



- 3) Launch each shortcut



Digital Security Systems

JDS Digital Security Systems

P.O. Box 374

New Baltimore, MI 48047

(586) 749-6342

(734) 629-1555

www.jdssecuritysoftware.com

Softsite32: Archive Manager on E:\Archives

Settings Log Help

Root Path: E:\Archives

Last Scan: Waiting for 'Next Scan Time'...

Next Scan: 9/8/2008 2:27:09 PM 02:26:55 pm

Intention: Delete the oldest files once disk free space falls below 10 %. Logging is ON

Target:

Action:

Disk Statistics

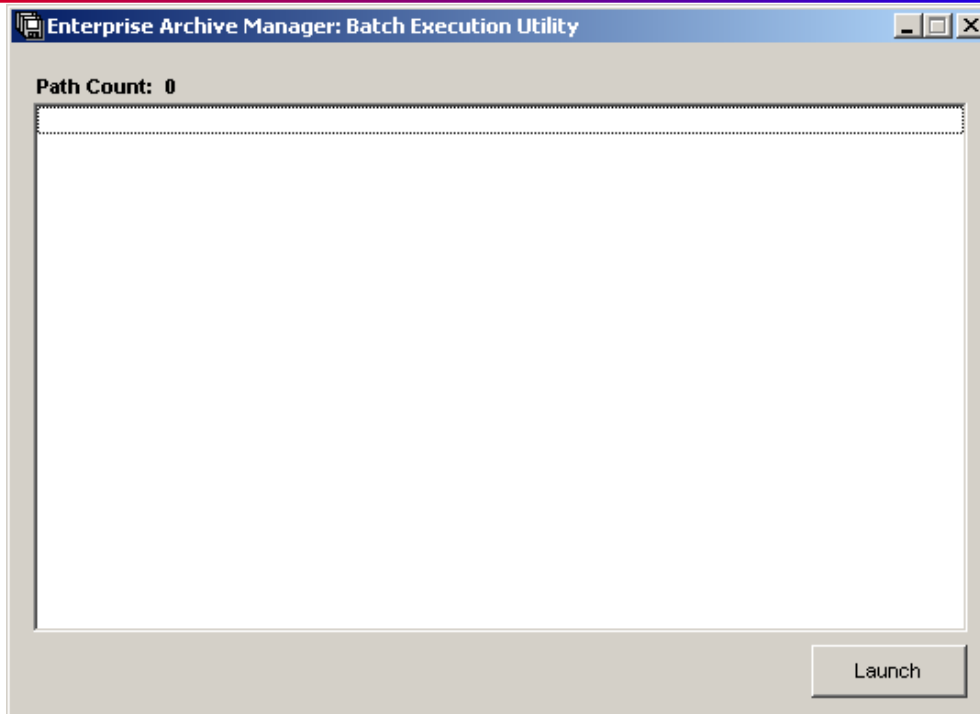
Drive	Disk Usage Profile	Disk Size	PCT Free	MB Free	MB Alert
Record:	<input type="text"/>	200.434 GB	36.03%	73,952.3	50.0
Backup:	<input type="text"/>	. MB		0.0	75.0

Autostart is ON: Autodelete executes every 62 minutes. 1.05.0201

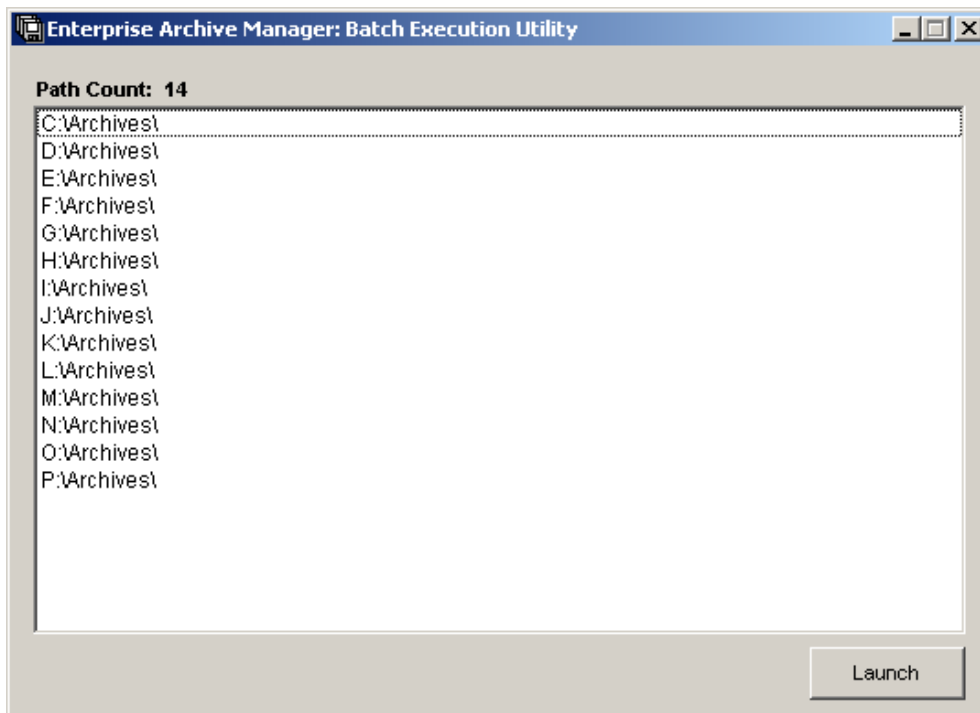
Open Access

Manager is Running... 2:26 PM

- 4) If you have too many paths to create shortcuts for, you can use ArchMaintBatch.exe in conjunction with root paths.txt to automatically launch multiple copies of archive manager.

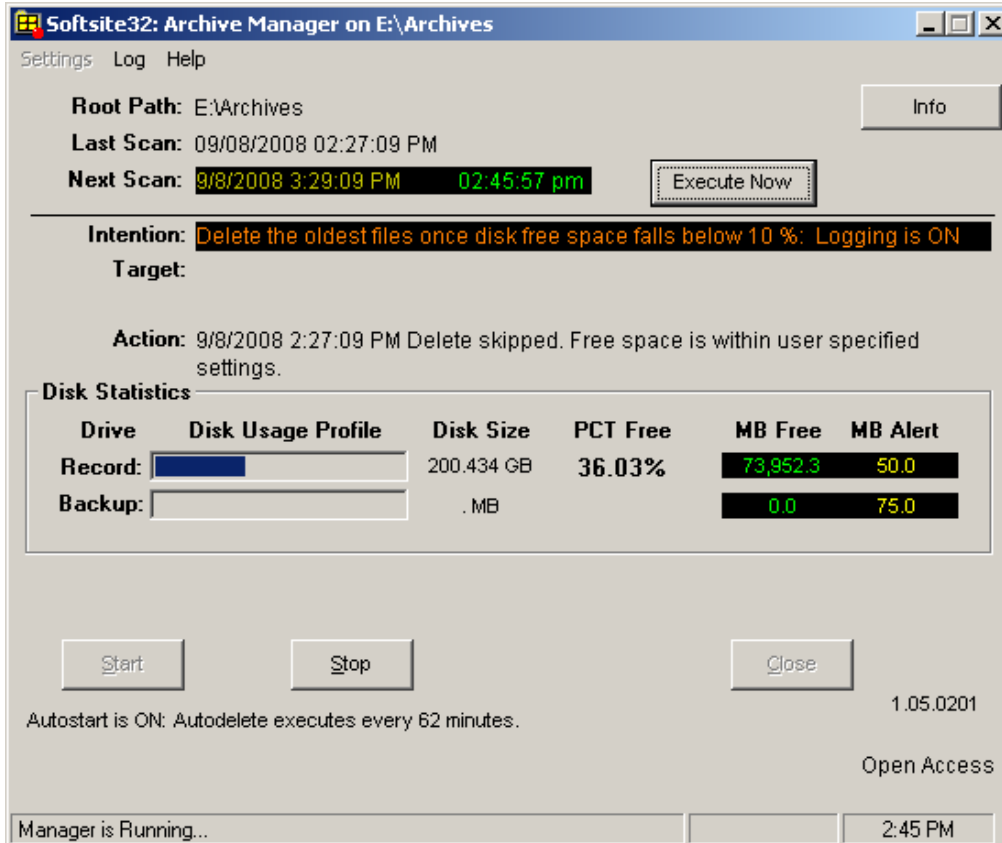


- 5) To configure ArchMaintBatch.exe, place all paths being monitored in *root paths.txt*. save the file and launch ArchMaintBatch.exe.



- 6) You can create a shortcut and use /auto in the target to automatically launch all of the instances in the txt file.
- 7) Hit Launch to start the multiple copies of Archive Manager

3. Main Panel



Settings Log Help

Root Path: E:\Archives

Last Scan: 09/08/2008 02:27:09 PM

Next Scan: 9/8/2008 3:29:09 PM 02:45:57 pm

Intention: Delete the oldest files once disk free space falls below 10 %. Logging is ON

Target:

Action: 9/8/2008 2:27:09 PM Delete skipped. Free space is within user specified settings.

Disk Statistics

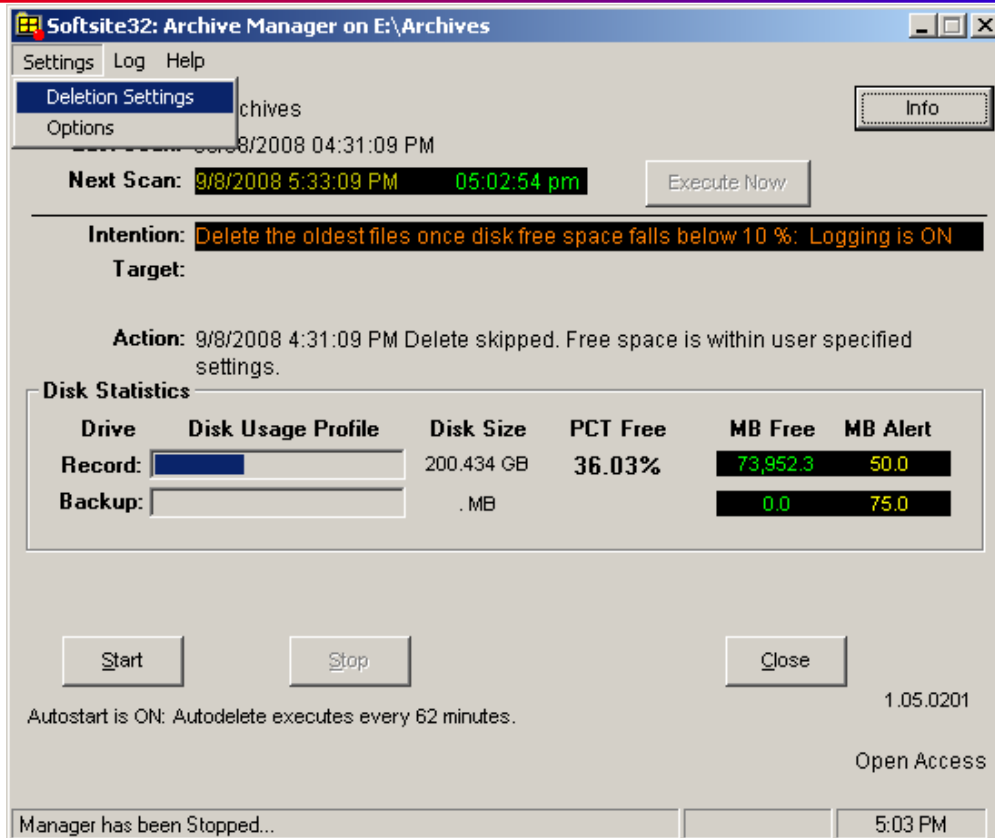
Drive	Disk Usage Profile	Disk Size	PCT Free	MB Free	MB Alert
Record:	<input type="text"/>	200.434 GB	36.03%	73,952.3	50.0
Backup:	<input type="text"/>	. MB		0.0	75.0

Autostart is ON: Autodelete executes every 62 minutes. 1.05.0201

Open Access

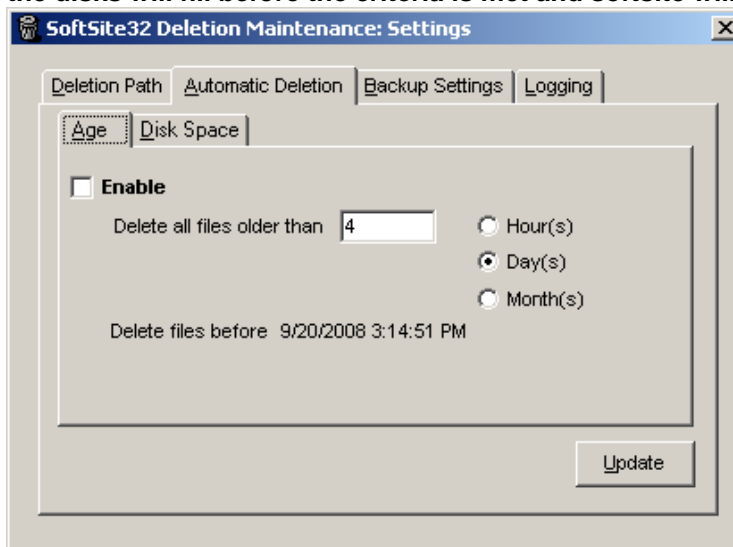
Manager is Running... 2:45 PM

- 1) Archive Manager is configured to delete on a FIFO method(first in first out), and the application is set to delete after the disk reaches 10% free disk space, it continues deleting until it reaches 15%, the software scans hourly for this criteria. These settings, and criteria can be changed, to delete on a time frame, or the disk size criteria can be changed.
- 2) Here is an explanation of the items you will see on the monitoring panel
 - Root Path:** Path where application is monitoring(path set in INI file)
 - Last Scan:** Time last scan took place
 - Next Scan:** Application will scan and delete if disk space is below set amount or date and time requirements have been met
 - Execute Now:** Forces scan to run immediately NOTE: will not delete if size/date is within parameters set
 - Drive Statistics:** Lists the statistics for the drive being monitored
 - PCT Free:** Lists the percent left of free disk space
 - Start:** Starts the application monitoring, if grayed out application is already running.
 - Stop:** Stops the application from scanning, if grayed out application is stopped
 - Close:** Closes application but it must not be running.
- 3) To change the criteria, press the stop button, than the settings, deletion settings



- 4) From this panel, you can change almost all of the settings, you can in the ini. To change the automatic deletion, from percentage to age, select the automatic deletion tab, and select Age. Check the Enable checkbox and select the period you wish to retain. Any changes made on any of these tabs will require the archive manager to be restarted for them to take effect

NOTE: Selecting deletion by age requires that that you have adequate disk storage. If you do not the disks will fill before the criteria is met and softsite will stop recording.





Digital Security Systems

JDS Digital Security Systems

P.O. Box 374

New Baltimore, MI 48047

(586) 749-6342

(734) 629-1555

www.jdssecuritysoftware.com

ssArchMaint.ini

Table with 2 columns: Parameter Name and Description. Parameters include RecordImagesBasePath, BackUpBeforeDeletion, BackupDrive, LogDeletions, MaxLogSizeBytes, DebugLevel, DeletionInterval, DeletionIntervalStyle, EmailUserID, EmailUserPW, EmailReceipient, SendEmailAlerts, DisplayDiskUsage, DisplayRecordDisk, DisplayBackupDisk, RecordAlertLimit, BackupAlertLimit, AutoStart, MinimizeOnStartup, QueryUserForDeletion, DeletionType, FreeDiskLimitPercent, FreeDiskCeilingPercent, QuantityToDelete, DisableDelete, DeleteArchiveIntervalMins, ThDelay, DeletionBurstCount, DeletionDelayMS, UseAPIDelete, UseSecureLogin.



JDS Digital Security Systems

P.O. Box 374

New Baltimore, MI 48047

(586) 749-6342

(734) 629-1555

www.jdssecuritysoftware.com

ArchMaintBatch.exe

Used for launching archive manager for multiple paths without Shortcuts for each

To configure, place all paths being monitored in *root paths.txt*. save the file and launch ArchMaintBatch.exe.

You can create a shortcut and use /auto in the target to automatically launch all of the instances in the txt file