



JDS Digital Security Systems
P.O. Box 374
New Baltimore, MI 48047
(586) 749-6342
(734) 629-1555
www.jdssecuritysoftware.com

Softview Digital Video Editor

QuickStart

1/4/2009

SoftviewDVE is a utility used to create one video stream from multiple sources and allows for synchronized playback up to 9 cameras. It may be used to splice specific time periods from multiple cameras and multiple NVR systems. SoftviewDVE is accessible from the desktop shortcut, within enterprise, and many other applications.

SoftviewDVE.exe is installed by Softsite32 Surveillance products automatically.

1. Initial Setup

- 1) Locate the softviewdve.ini. . If it was installed with Softsite32 Enterprise, it is in the root installation folder (c:\program files\softsite32 enterprise\). If SoftViewDVE was installed as a stand alone application, by default it is located here: C:\Program Files\SoftSite Digital Video Editor.
- 2) Open the INI for editing.
- 3) Edit the *DefaultArchivePath = C:\Archives* line if you are not recording to the C drive. Leave the path blank and DVE will read from the database.
- 4) Edit the *DefaultDatabasePath = C:\Program Files\SoftSite32 Enterprise\Database\softsite.mdb* line if this database is not local or not installed in the default directory.
NOTE: Both of these lines can use UNC paths to read over the network.

2. Review and Edit Archives(Normal Mode)

To access *SoftviewDVE* you can either

- Launch the application from the shortcut on the desktop
- Launch the application from the playback window in Viewstation
- Launch the application from *Enterprise* by selecting the archives button at the top of the window on the left

After the application launches, you see this window. We will briefly explain the menu structure below



Digital Security Systems

JDS Digital Security Systems

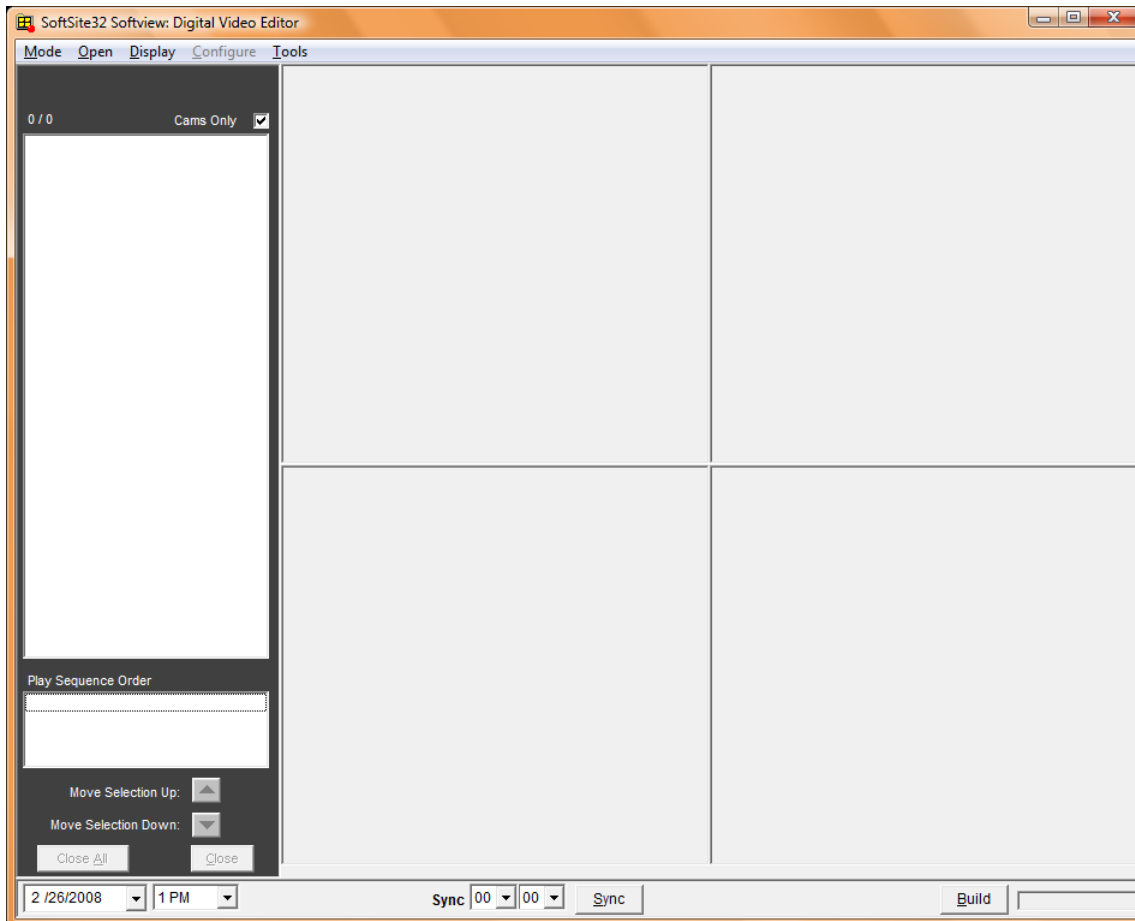
P.O. Box 374

New Baltimore, MI 48047

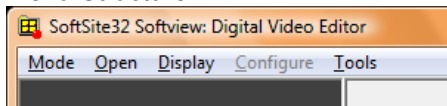
(586) 749-6342

(734) 629-1555

www.jdssecuritysoftware.com



Menu Structure

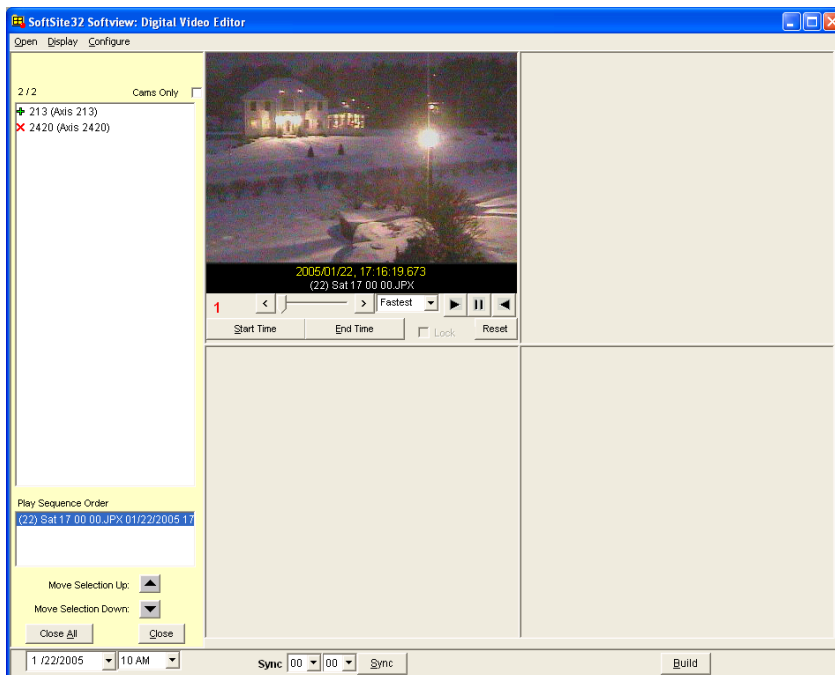


1. Mode
 - Simple Playback
2. Open
 - For Editing
 - For Playback
3. Display
 - Show Sync Playback Controls
4. Configure
 - Is disabled
5. Tools
 - Convert to JPG/AVI

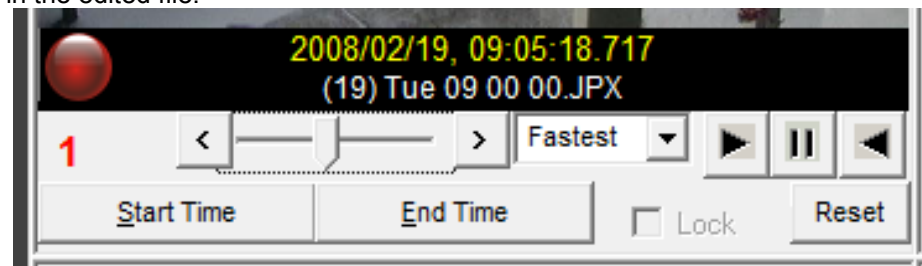
- 1) Select the date and time you wish to open here



- 2) Select the camera and drag video into available window. **The Softview Icon will be highlighted as you drag video into the window. Repeat to fill up the four available windows. You can view the servers by unchecking the cam checkbox at the top right of the list.

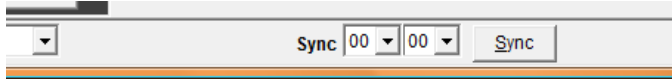


- 3) Use VCR buttons and the Slider below in each window to identify the specific video segment that is to be included in the edited file.



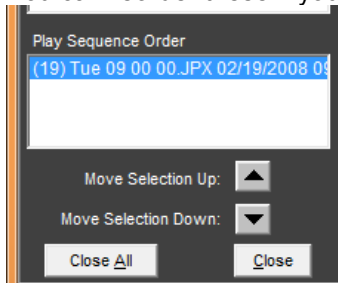
Once the 1st frame of video is located hit Start Time. Click End Time when the last frame is located, and then click off the LOCK button (a start and end time must be identified to lock the stream). Repeat on all windows.

- If all streams are from the same hour of time, you can Sync all four windows to the same time in the hour using the Sync button. Select minutes and seconds and hit Sync. **NOTE: Sync will try and match up time frames for all videos, if the exact time cannot be found it will find the closest time match.**

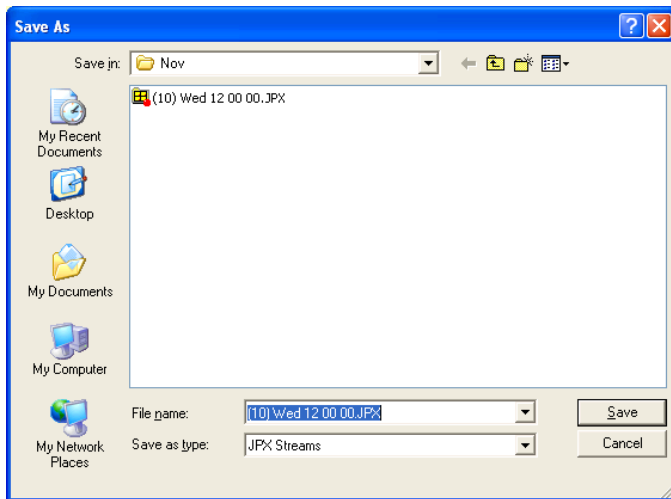


- You can right click on any of the video windows and get a menu that will allow you to jump an hour forward or backwards in time, copy the image to the clipboard, or export the frame to jpeg.
- The red led button above is our new One Click Burn Feature See here for more info

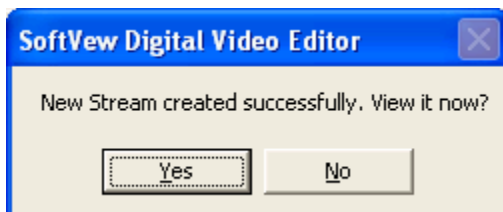
4) Streams are added to the edited file by default from the top left, to top right, to the bottom left to the bottom right. You can reorder these if you need to here.



5) To create the new video stream click the Build button, you will be asked to name the file and select a save location. **NOTE: Original Files are not altered when the DVE creates the edited file**



6) Once Stream is created click YES to view





Digital Security Systems

JDS Digital Security Systems

P.O. Box 374

New Baltimore, MI 48047

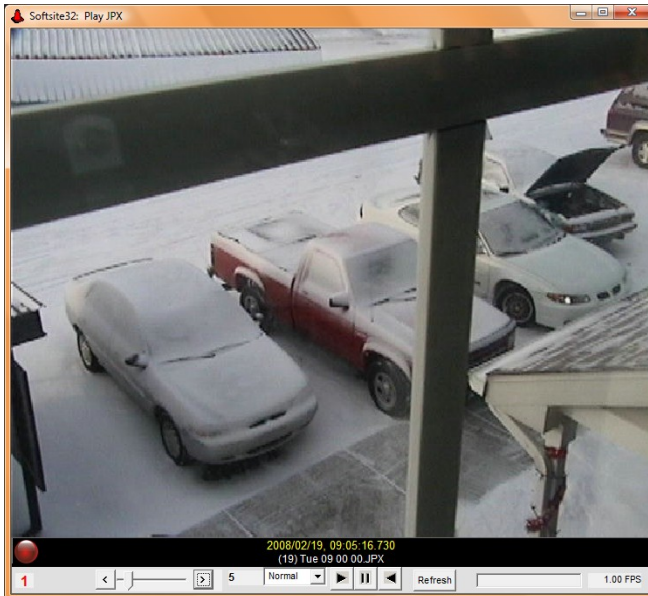
(586) 749-6342

(734) 629-1555

www.jdssecuritysoftware.com

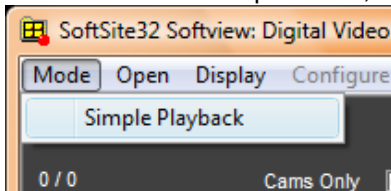


- 7) Use the VCR buttons to play back new stream



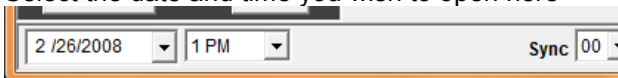
3. Review Archives(Simple Mode):

DVE by default launches in normal editing mode. You can also use DVE to playback files one at a time, in simple mode. To enable simple mode, Select *Mode, Simple Playback*



To enable this mode by default, you can edit your softviewDVE.ini file. Close the application and navigate to the installed application directory. This is normally C:\Program Files\Softsite32 Enterprise\ or C:\Program Files\SoftSite Digital Video Editor\. Open the SoftviewDVE.ini, and *SimplePlaybackMode=FALSE* to *TRUE*. Save the changes to the file and reopen DVE.

- 1) Select the date and time you wish to open here



- 2) Select the camera in the list and drag video into available window. **The Softview Icon will be highlighted as you drag video into the window. You can view the server names by unchecking the cams checkbox at the top right of the list
- 3) Review the archive using the VCR buttons, and the slider at the bottom.



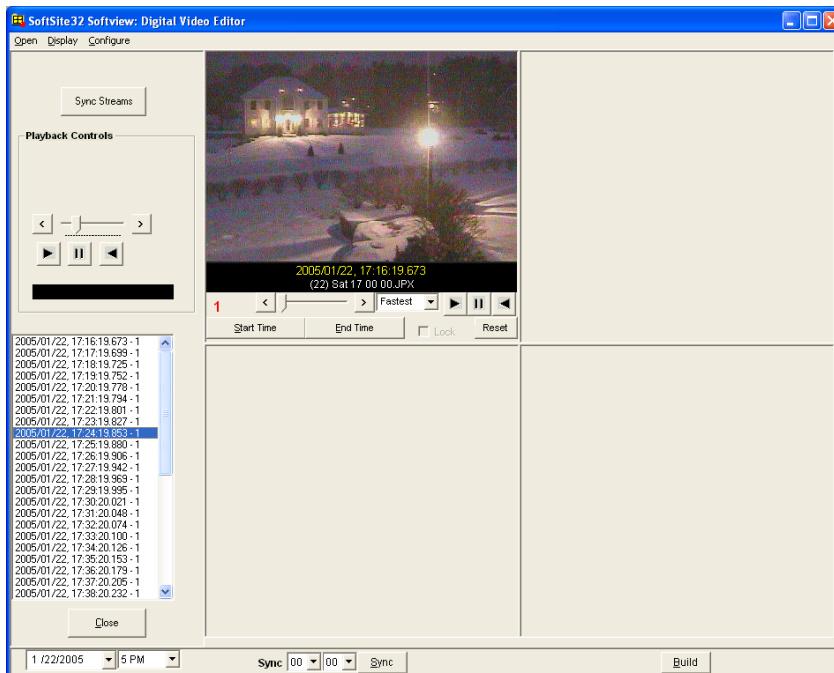
JDS Digital Security Systems
P.O. Box 374
New Baltimore, MI 48047
(586) 749-6342
(734) 629-1555
www.jdssecuritysoftware.com

4) To close the stream select the close button on the left

4. Synchronized Playback:


Synchronized Playback allows user to view multiple streams from the same time period

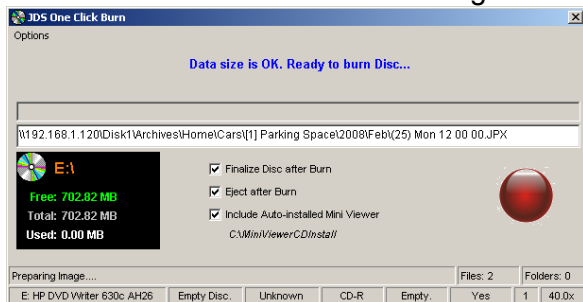
- 1) After selecting video, from the cameras you wish to view(all the same hour), click on the Display and select SHOW PLAYBACK CONTROLS
- 2) Click Sync Streams
- 3) Hit the Play button to start synch playback at beginning of segment
- 4) Click on any time segment to determine launch time of playback (the slider will move to indicate a specific time has been selected)



5. One Click Burn

- OCB takes and burns any jpx file opened to a cd/dvd automatically in ONE Click.
- JDS Mini Viewer can also be burned to disk for review of archives on a computer without Softsite32 installed.
- The Cd/Dvd with the Mini Viewer will autolaunch the installer and if already installed will launch the mini viewer with the JPX file loaded.
- Anywhere you see the red led button you can, automatically burn the opened jpx/avi file
- You will need to download and unzip the MiniViewerCDInstall.zip from [here](#) and place these files in their own directory C:\MiniViewerCDInstall, for the viewer to be burned to disk with the video file

- 1) Insert Cd/Dvd into the drive
- 2) Open the Archive you wish to burn, wherever you see the red led button
- 3) Click the red led button  to begin burning.



- 4) Image is created and burned to disk



- 5) Disk is finalized and ejected by default, if the miniviewer files have been installed, the miniviewer install and the autorun files will also be added to the disk.



Digital Security Systems

JDS Digital Security Systems

P.O. Box 374

New Baltimore, MI 48047

(586) 749-6342

(734) 629-1555

www.jdssecuritysoftware.com

SoftviewDVE.ini settings

SimplePlaybackMode	Defaults DVE to Simple mode
UseDefaultsPathsOnly	Uses default local database or NVR database
CameraDatabasePath	Path where the local database is located
DefaultArchivePath	The default path of archives for the local database leave blank for database recall of archive location
Use24HourMode	Displays military time
Database_Name	Path of the NVR database
CacheDBLocally	Brings the network stored database to the local machine
CacheLocalPath	Path where database is stored after caching
CacheFilesLocally	Downloads archives locally before playing
UseSecureLogin	Uses Softsite32 passwords
UserMinAccessLevel	Access level needed to use dve
DisableCopyFunctions	Disables any copy functions
UseLiteralRecPath	Bypasses groups for review or archives
LaunchPosX	Sets Launch position in X coordinate
LaunchPosY	Sets Launch position in Y coordinate
UseSecondaryRecPath	Forces Archive lookup using the secondary path set in the database
Eject	Enables auto eject on completion of burn
FinalizeDisk	Disk is burned and closed so that no more data can be written. This should be left as true
IncludeMiniviewer	Adds miniviewer application to disk as well as autorun, and install batch files
MiniViewerInstSourceDir	If IncludeMiniViewer is true all files located here are added to the disk. Normally these are the Cd install files