



JDS Digital Security Systems
P.O. Box 374
New Baltimore, MI 48047
(586) 749-6342
(734) 629-1555
www.jdssecuritysoftware.com

Table Manager

Quickstart

12/22/2008

The Table Manager is necessary to manage and create accounts for use by Enterprise Viewstation software

The Table Manager can also be used to manage logins for Softsite32 Enterprise. In this manner, Enterprise only implements the use of the login accounts tab.

The Table Manager software updates softsite.mdb. It is the main database used by Softsite32 Enterprise and can be found at

C:\Program Files\Softsite32 Enterprise\Database or **C:\Program Files (x86)\Softsite32 Enterprise\Database**

Launch the Application

Locate the Table Manager application, in either the Enterprise, or the Viewstation install directory.

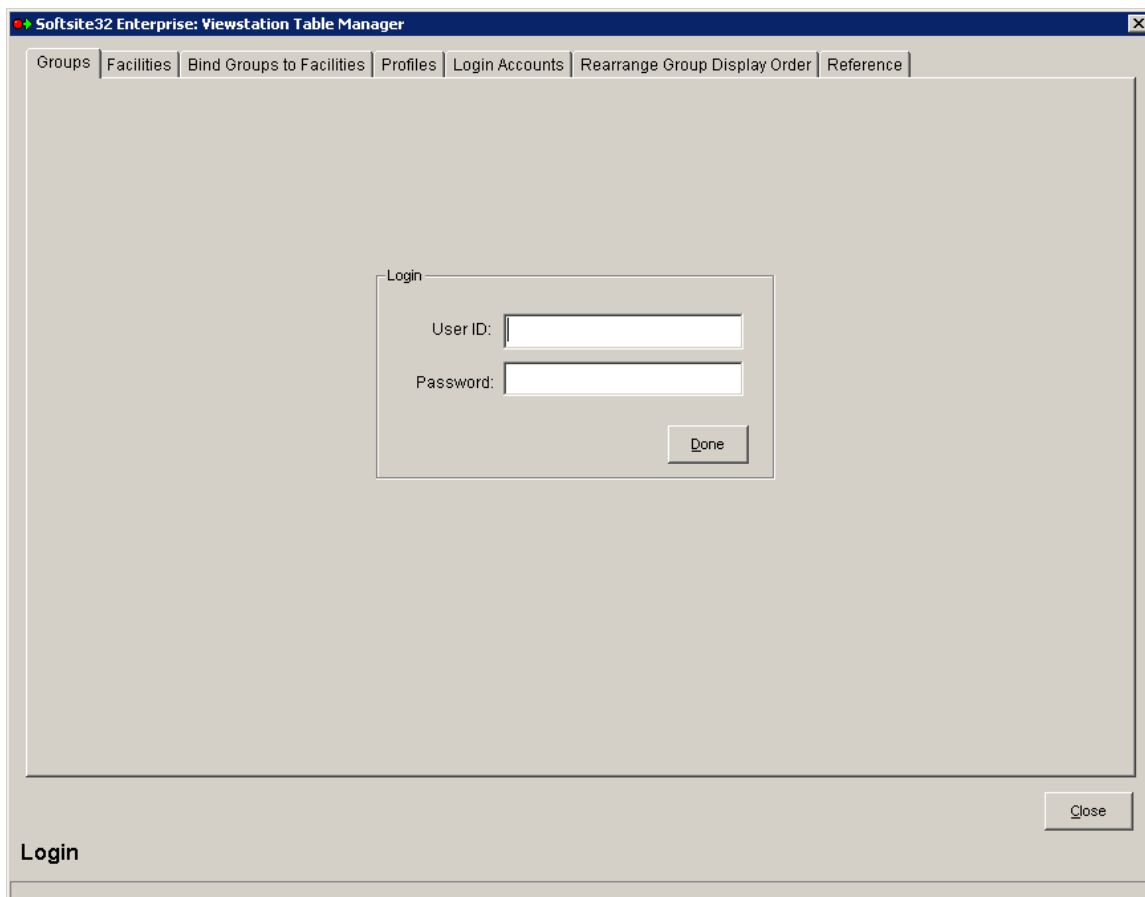
These are normally here, C:\Program Files\Softsite32 Enterprise and C:\Program Files\ENTViewstation

Double click SS32_TBL_MGR.exe

You will need to login with an administrator login



JDS Digital Security Systems
P.O. Box 374
New Baltimore, MI 48047
(586) 749-6342
(734) 629-1555
www.jdssecuritysoftware.com



The System Hierarchy is as follows

1. **Facilities** (*Groups of cameras are listed in a facility... Ex., Maint_Building*) Also can be thought of a *Groups of Groups.*
2. **Groups** (*Cameras are logically listed into Groups... Softsite32 Enterprise uses groups to record and manage multiple cameras*)
3. **Cameras** (*the actual IP Cameras or Video Servers{encoders}*)
4. **User Profiles** (*Facilities are listed in a user profile... Ex. Commissioner can see all facilities, a janitor can only see one facility which may or may not contain 1 or more groups of cameras*)
5. **User Login Accounts** (*a user login is bound to a profile to inherit the characteristics of the profile*)

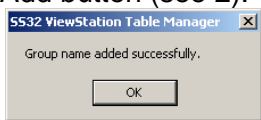
Create your configuration in this order

1. Make logical camera groups.
2. Make Facility names and assign groups to them.
3. Make User profiles and assign Facilities and user rights to them.
4. Make Login accounts and bind User Profiles to them.

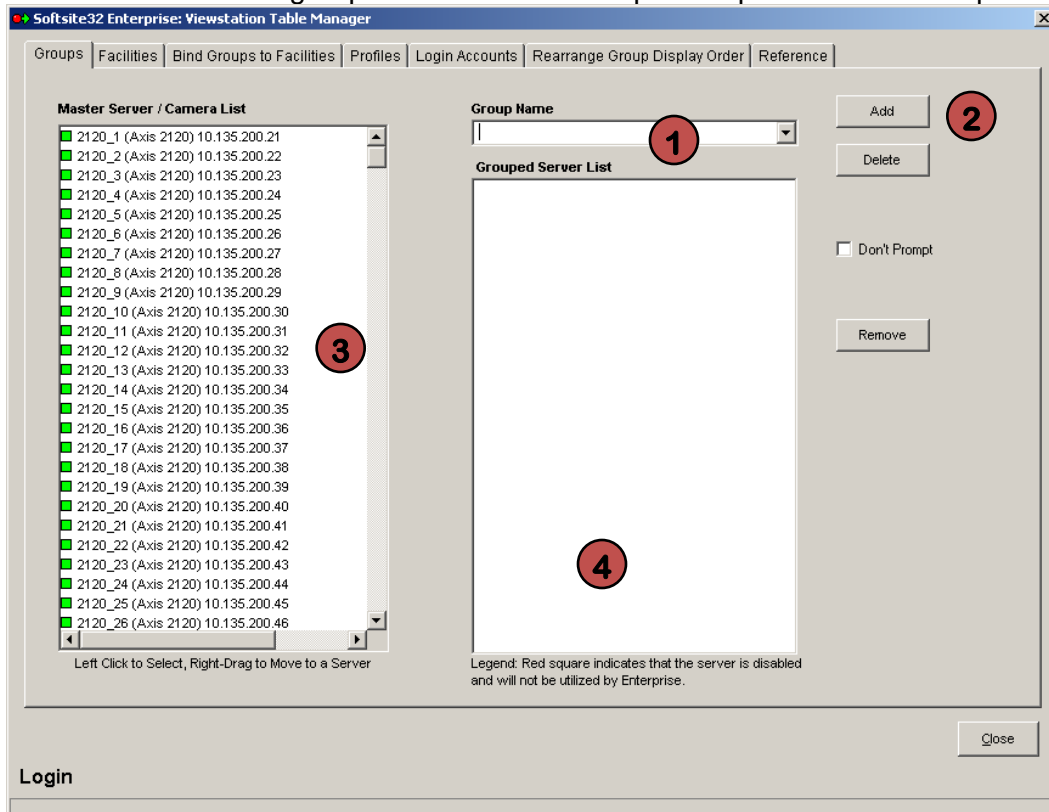
1. Make Logical Camera Groups

In most cases the groups will already have been created in Softsite32 Enterprise. You can create them here as well

1. Add a new group name, Type the group name in the Group Name Box (see 1).
2. Click the Add button (see 2).



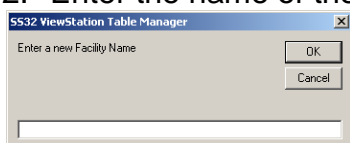
3. Click OK
4. Select group from Group Name Box (see 1).
5. Select Camera from Master Server/Camera List (see 3).
6. Right Click and drag camera from Master Server/Camera to Grouped server list and release (see 4).
7. Repeat steps 6-7 till all of the cameras are in the group.
8. To create another group and add cameras repeat steps 1-6 and then repeat 6-7.



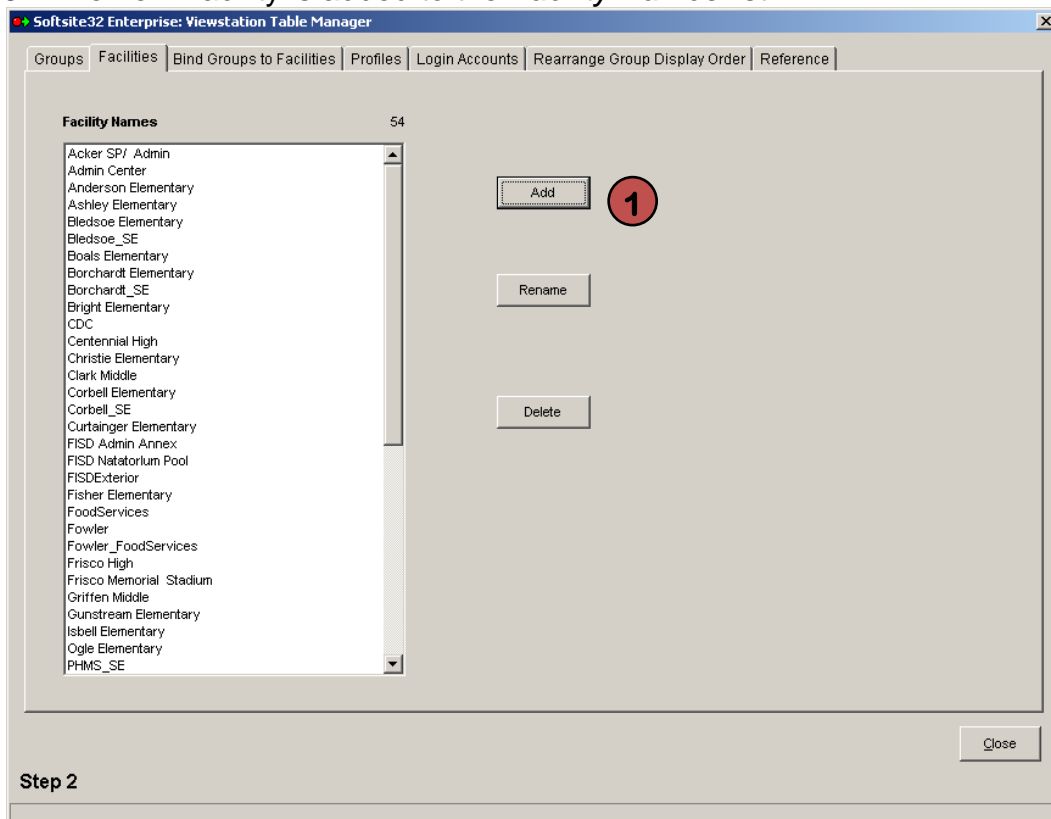
2. Create Facilities

You must create facilities to use Viewstation
Select the *Facilities* tab

1. Click the *add* button to add a new facility (see 1).
2. Enter the name of the new facility then click *ok*.



3. The new Facility is added to the *Facility Names* list.

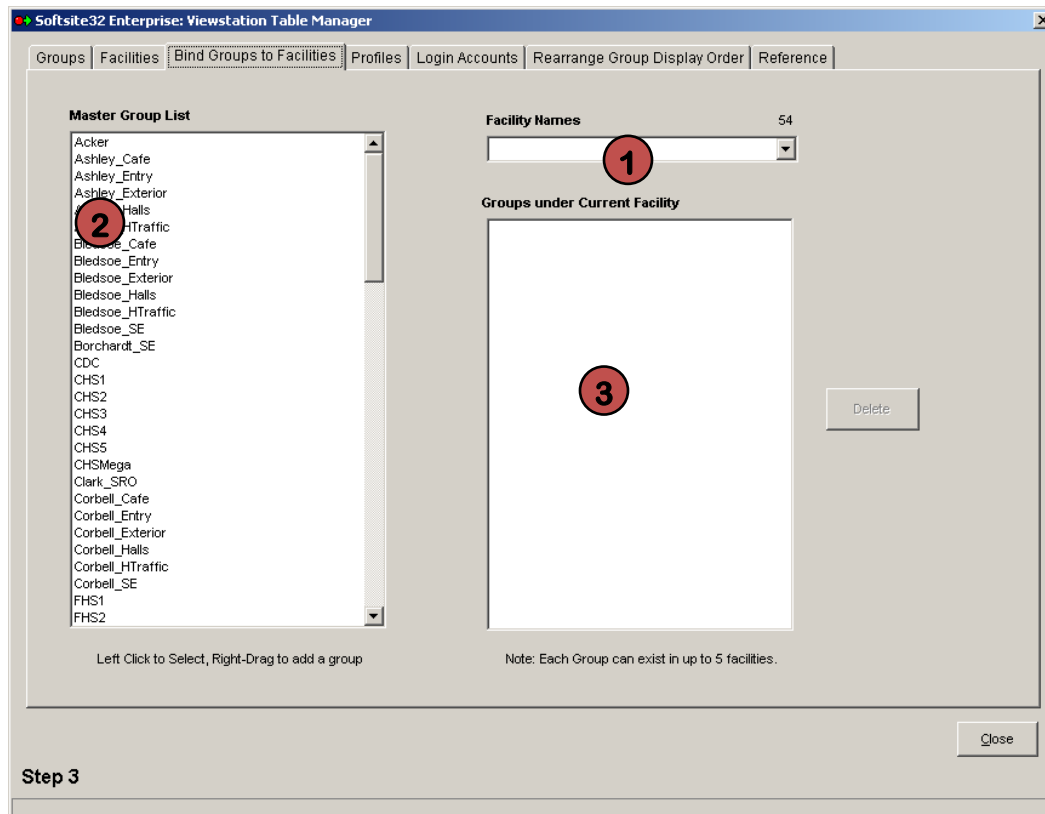


3. Add Groups to Facilities

Select the *Bind Groups to Facilities* Tab

1. Select the Facility name that you wish to add camera groups to (see 1).
2. Click on the Group you wish to place in the Facility (see 2).
3. Left click and drag the group to the *groups under current facility* list (see 3).

4. Release and click *ok*.
5. Repeat steps 2-4 until all groups are added for the selected facility.



4. Create User Profiles

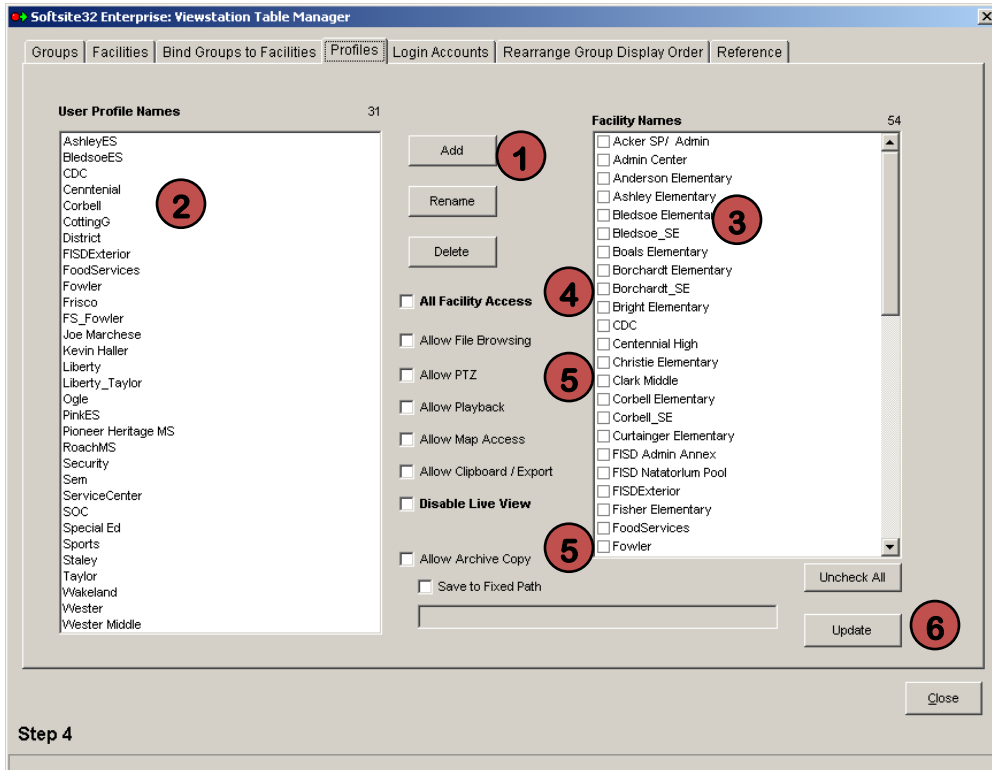
Select the *Profiles* tab

1. Click add to create the name of the new profile (see 1).
2. Type the name of the new profile and click *ok*.
3. The New profile is displayed in the *User Profile Names* list (see 2).

Assign facilities and user rights to profiles

1. Select the user profile from the *user profile names* list (see 2).
2. Select the facilities the user profile will have access to from the *Facility Names* list (see 3).
3. If the profiles is to have access to all the facilities check the All Facility Access checkbox (see 4).
4. Select which options the User profile will have (see 5).

5. Click Update to save the updated profile (see 6).



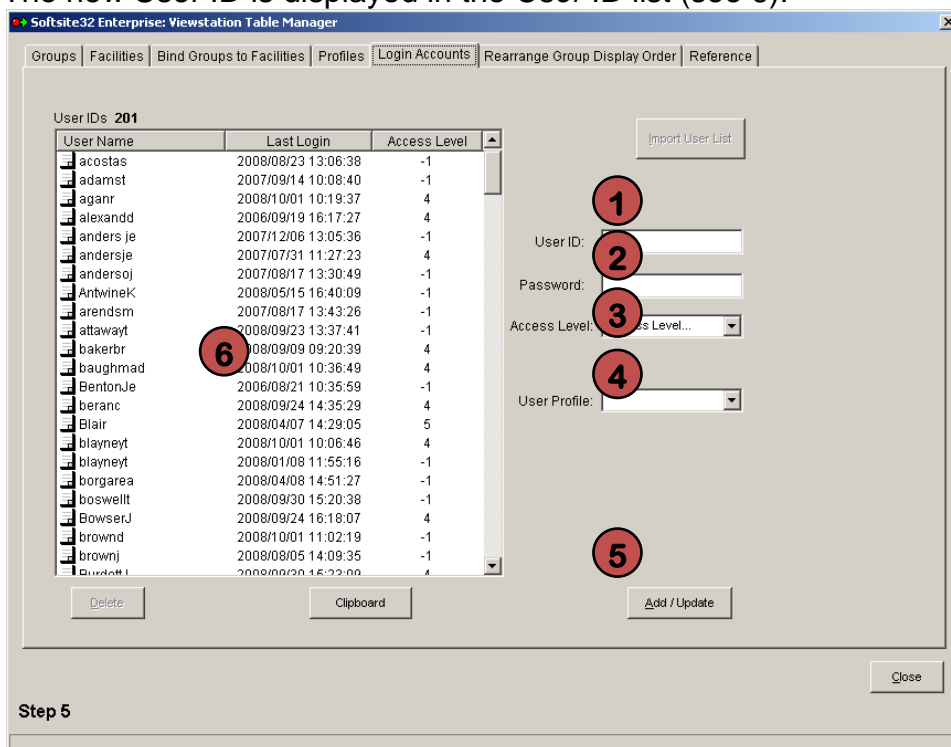


5. Assign Profiles to Login Accounts

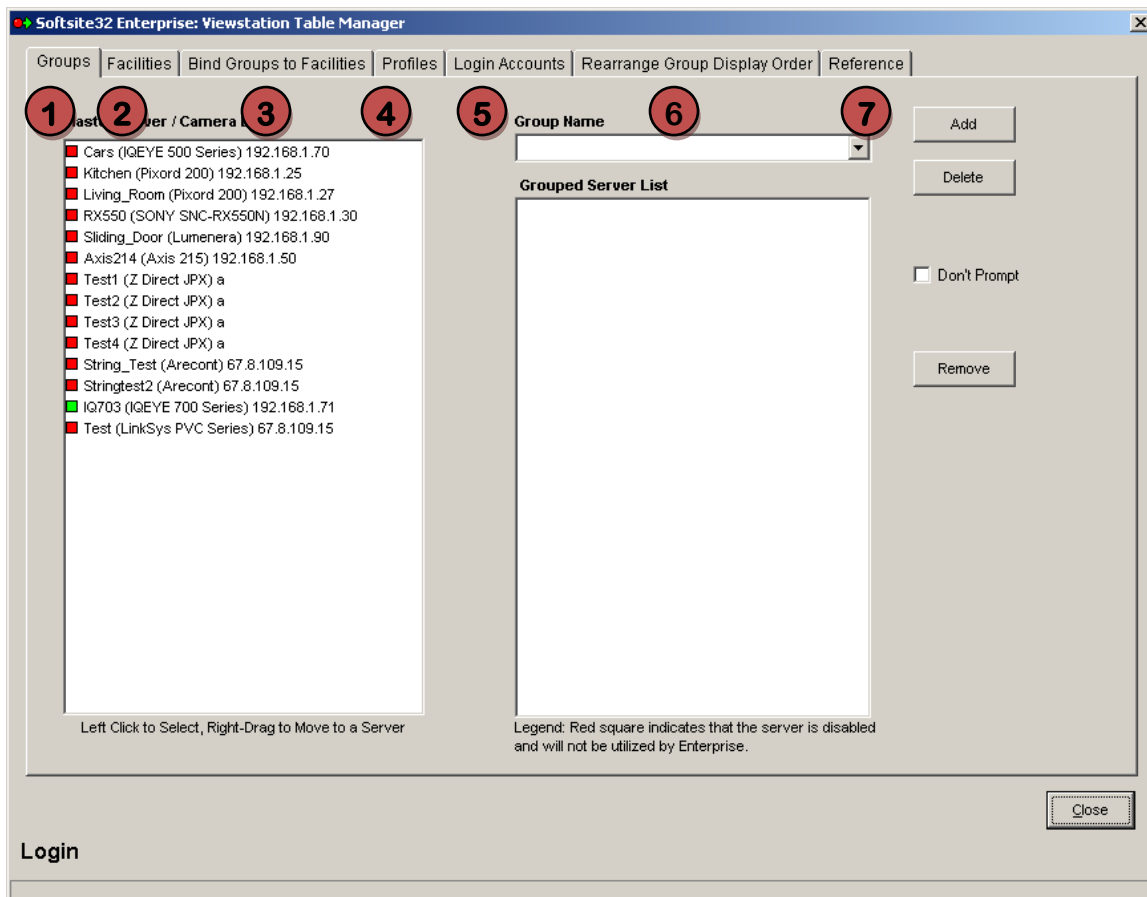
1. Select a User ID from the list(see 6) and jump to step 4,
2. To create a User ID, type a user name into the *User ID* field (see 1).
3. Type a password into the *Password* field (see 2).
4. Select the *Access Level* for Softsite: This does not apply to the Viewstation (see 3).
5. Select the Profile you wish to use with this Login (see 4).
6. Click *add/update* to save the login account.

NOTE: Any users added through the softsite32 enterprise interface must have the user profile assigned through here.

7. The new User ID is displayed in the *User ID* list (see 6).



Tabs



1. Groups

- Allows moving of cameras into groups much like group editor

2. Facilities

- Allows Facilities to be created. Facilities are locations with separate NVR's and groups. Facilities also allow for extra access security

3. Bind Groups to Facilities

- Adds groups to created facilities for organization and access security

4. Profiles

- Profiles allow certain login accounts to be able to access only their facility or group of facilities

5. Login Accounts

- Setup which login account uses which profiles

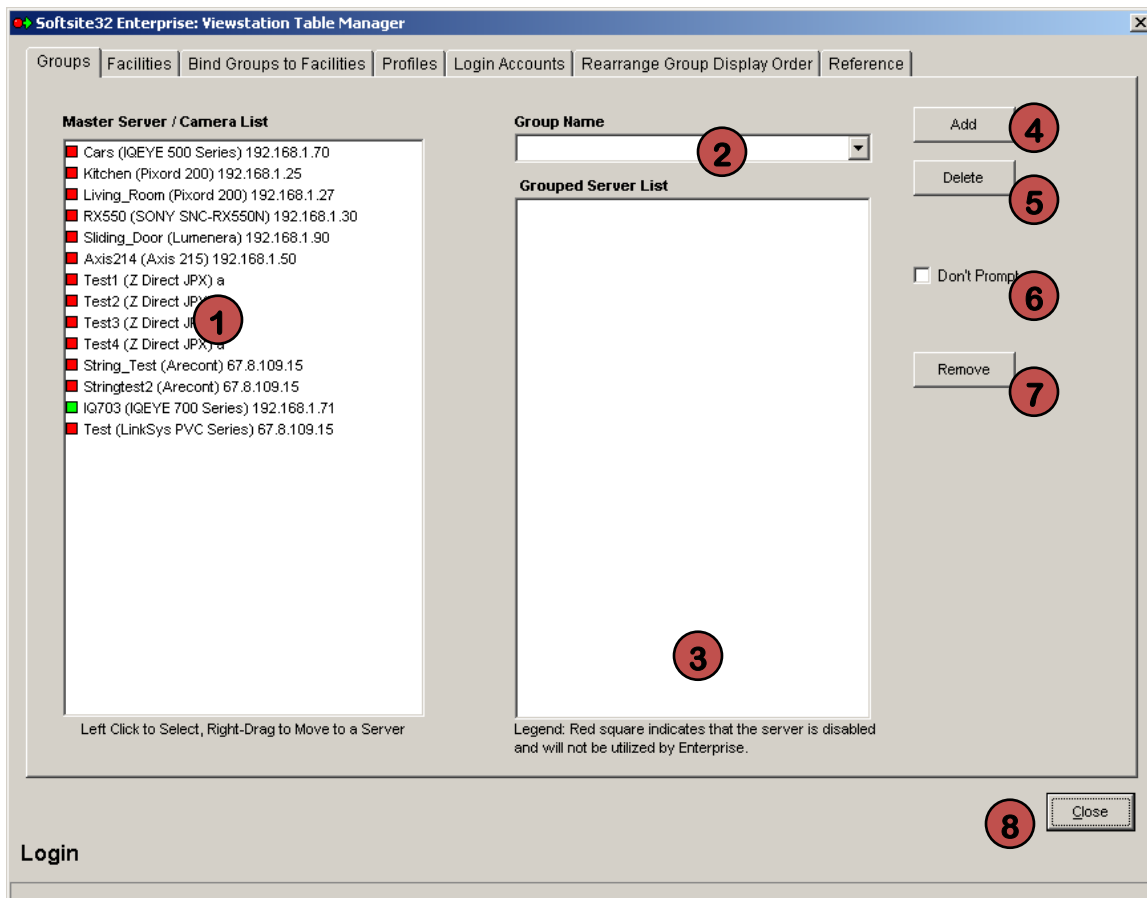
6. Rearrange Group Display Order

- Not currently implemented

7. Reference

- Quick reference of each tab

Groups Tab



1. Server/Camera List

- All cameras in the database are listed here. Left Click to select a camera and then right-drag camera to the grouped server list after selecting a group

2. Group List

- Drop down menu to select group to add cameras to. Must be selected prior to dragging cameras over

3. Grouped Server List

- List of all server in the current group selected

4. Add Button

- Add a group to the group list

5. Delete Button

- Delete a group from the group list

6. Don't Prompt Button

- Don't prompt before changes made(Expert Mode)

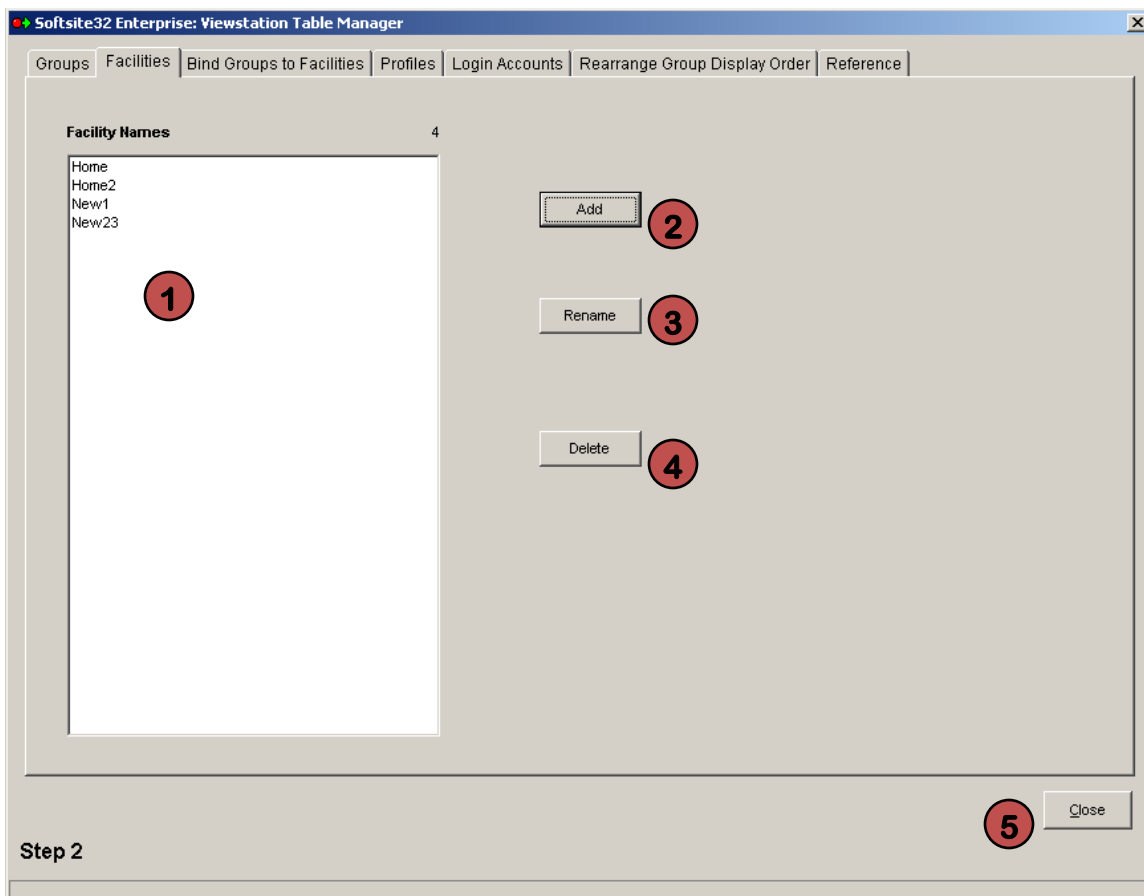
7. Remove Button

- Remove a camera from the current group selected

8. Close Button

- Close the Table Manager

Facilities Tab



1. Facility List

- List of all Facilities added to the table

2. Add Button

- Add a Facility

3. Rename Button

- Rename a selected Facility

4. Delete Button

- Delete a selected Facility

5. Close Button

- Close the Table Manager



Digital Security Systems

JDS Digital Security Systems

P.O. Box 374

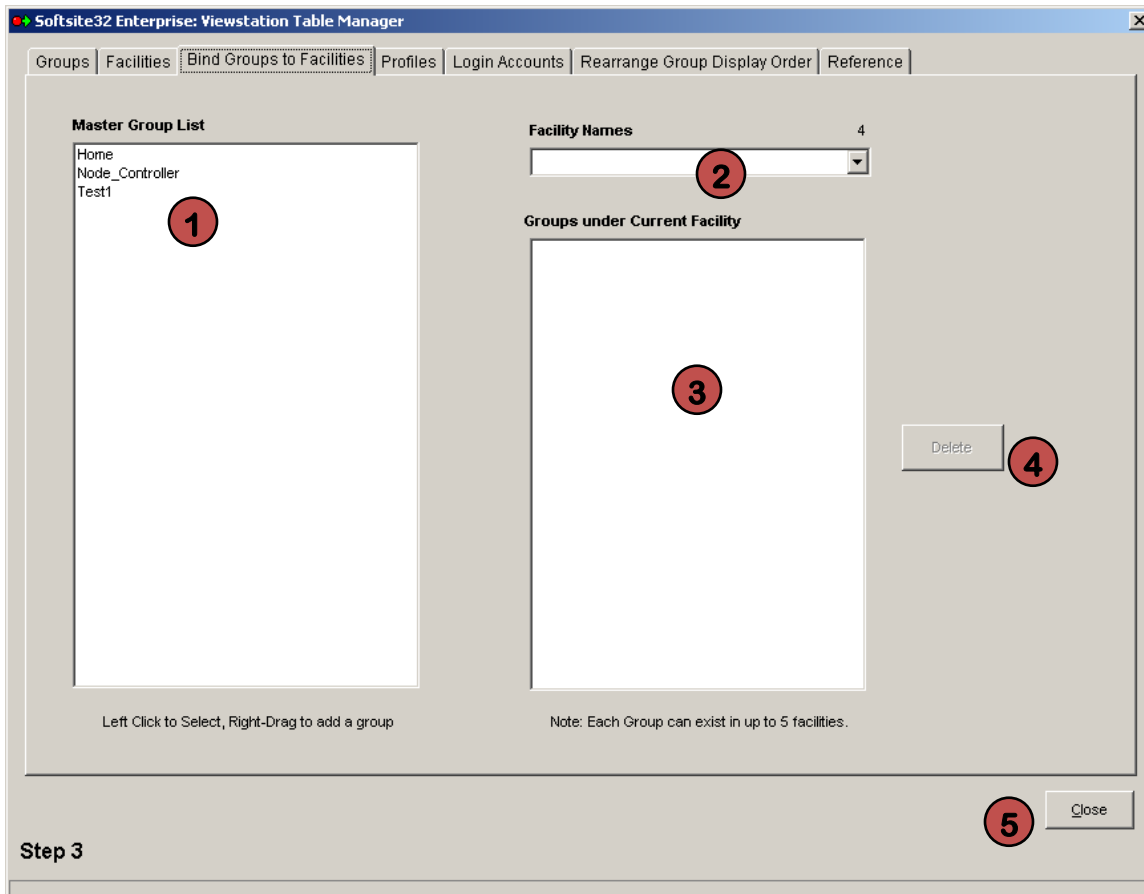
New Baltimore, MI 48047

(586) 749-6342

(734) 629-1555

www.jdssecuritysoftware.com

Bind Groups to Facilities Tab



1. Master Group List

- List of all groups in the database. Left click to select group and right drag to groups under facility list after facility has been selected

2. Facility List

- Select facility you would like to add groups to. Must select before dragging a group over

3. Groups Under Current Facility

- Displays all groups under the selected facility. Also drag point to add new groups

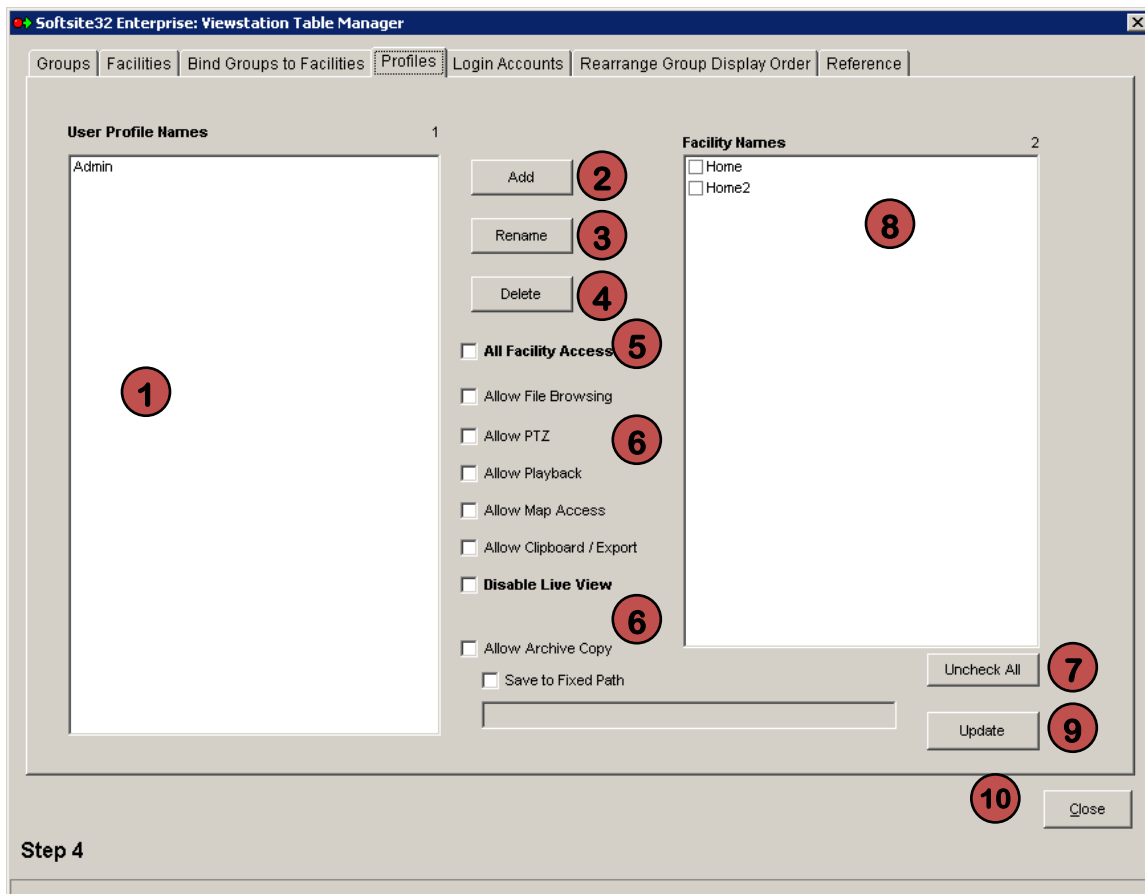
4. Delete

- Remove selected group from the Groups under current facility list

5. Close

- Close the Table Manager

Profiles Tab



1. User Profile Names

- List Of All Profiles Created

2. Add Button

- Add a Profile to the list

3. Rename Button

- Rename the selected profile

4. Delete Button

- Delete the selected profile

5. All Access Check

- Select to allow selected profile to access all functions

6. Access Level Checks

- Select to allow selected profile access to particular functions
 - Allow File Browsing:** Access to the browse the directory structure for the camera being reviewed
 - Allow PTZ:** Allows PTZ movement
 - Allow Playback:** Allows access to archives



JDS Digital Security Systems
P.O. Box 374
New Baltimore, MI 48047
(586) 749-6342
(734) 629-1555
www.jdssecuritysoftware.com

-
- d. **Allow Map Access:** Allows map access when a map is configured
 - e. **Allows Clipboard/Export:** Allows clipboard and export use when reviewing archives.
Note: Setting is ignored when playback is disabled
 - f. **Disable Live View:** Disables live camera viewing, cameras archives are accessed when a camera is selected
 - g. **Allow Archive Copy:** Allows archive to be saved to local machine or to fixed path
 - h. **Save to Fixed Path:** Only allows save to a specific path, can be a UNC path
7. **Uncheck All Button**
- Uncheck all facilities checked
8. **Facility Names**
- All facilities created on earlier tab. Checking allows selected profile access to the facility
9. **Update Button**
- Updates info for each profile. Must be clicked, before moving on to another tab or closing, to save settings
10. **Close**
- Close the Table Manager



Digital Security Systems

JDS Digital Security Systems
P.O. Box 374
New Baltimore, MI 48047
(586) 749-6342
(734) 629-1555
www.jdssecuritysoftware.com

Login Accounts Tab

Softsite32 Enterprise: Viewstation Table Manager

Groups | Facilities | Bind Groups to Facilities | Profiles | Login Accounts | Rearrange Group Display Order | Reference

User IDs 201

User Name	Last Login	Access Level
acostas	2008/08/23 13:06:38	-1
adamst	2007/09/14 10:08:40	-1
aganr	2008/10/01 10:19:37	4
alexadd	2006/09/19 16:17:27	4
anders je	2007/12/06 13:05:36	-1
andersje	2007/07/31 11:27:23	4
andersoj	2007/08/17 13:30:49	-1
AntwineK	2008/05/15 16:40:09	-1
arendsm	2007/08/17 13:43:26	-1
attawayt	2008/09/23 13:37:41	-1
bakerbr	2008/09/09 09:20:39	4
baughmad	2008/10/01 10:36:49	4
BentonJe	2006/08/21 10:35:59	-1
beranc	2008/09/24 14:35:29	4
Blair	2008/04/07 14:29:05	5
blayneyt	2008/10/01 10:06:46	4
blayneyt	2008/01/08 11:55:16	-1
borgarea	2008/04/08 14:51:27	-1
boswellt	2008/09/30 15:20:38	-1
BowserJ	2008/09/24 16:18:07	4
brownd	2008/10/01 11:02:19	-1
brownj	2008/08/05 14:09:35	-1
Burkett	2008/09/23 16:22:00	4

Import User List

User ID:

Password:

Access Level: Access Level...

User Profile:

Delete Clipboard Add / Update

Close

Step 5

1. User ID List

- Lists all User ID's, the last login date, and the softsite32 access level in the database, and any that are added from this tab. Columns can be clicked to sort by column.

2. User ID

- User ID is entered here

3. Password

- Password is entered here

4. Access Level

- Access Level is selected here (this is for main Softsite32 functionality)

5. User Profile

- User Profile attached to User ID is selected here (this is for Viewstation functionality)

6. Add/Update Button

- Adds New or updates current User ID

7. Delete Button

- Deletes the selected User ID

8. Close Button

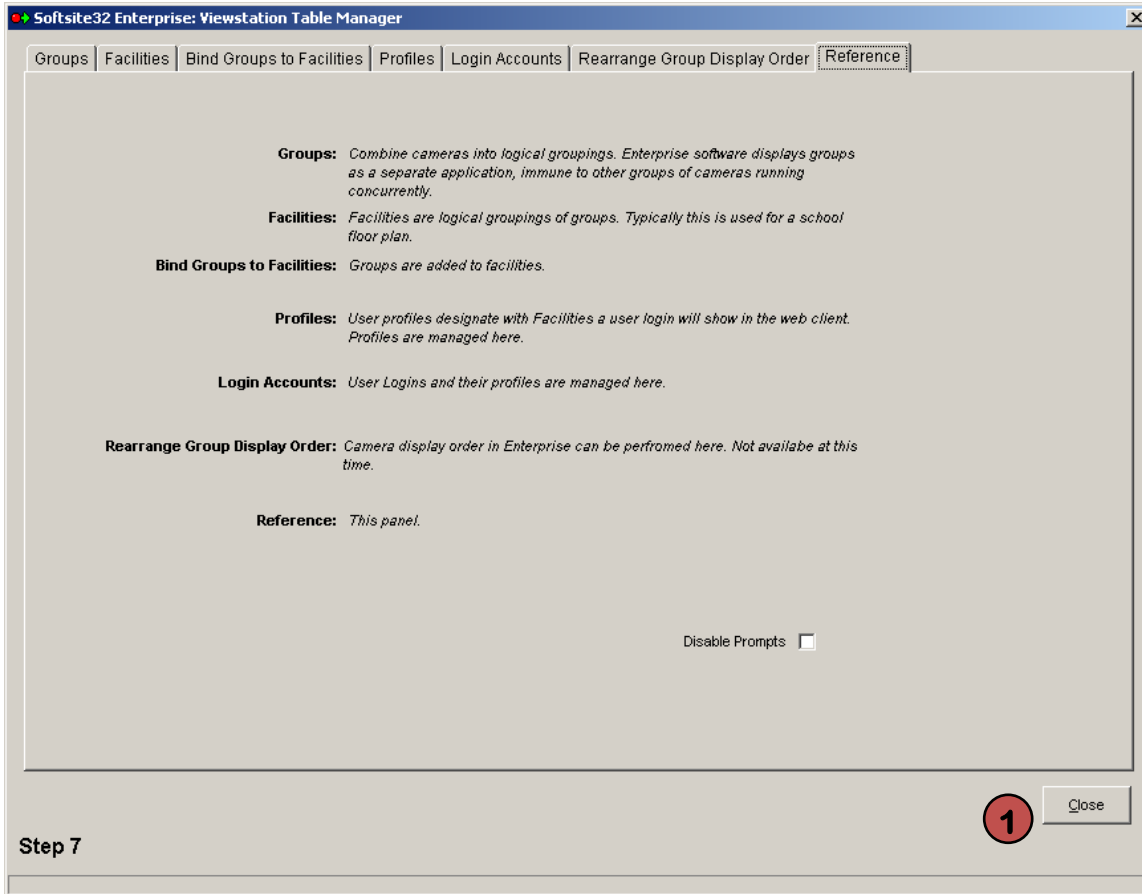
- Close the Table Manager



9. Clipboard

- Export the user list including passwords and access level

Reference Tab



1. Close

- Close the Table Manager